



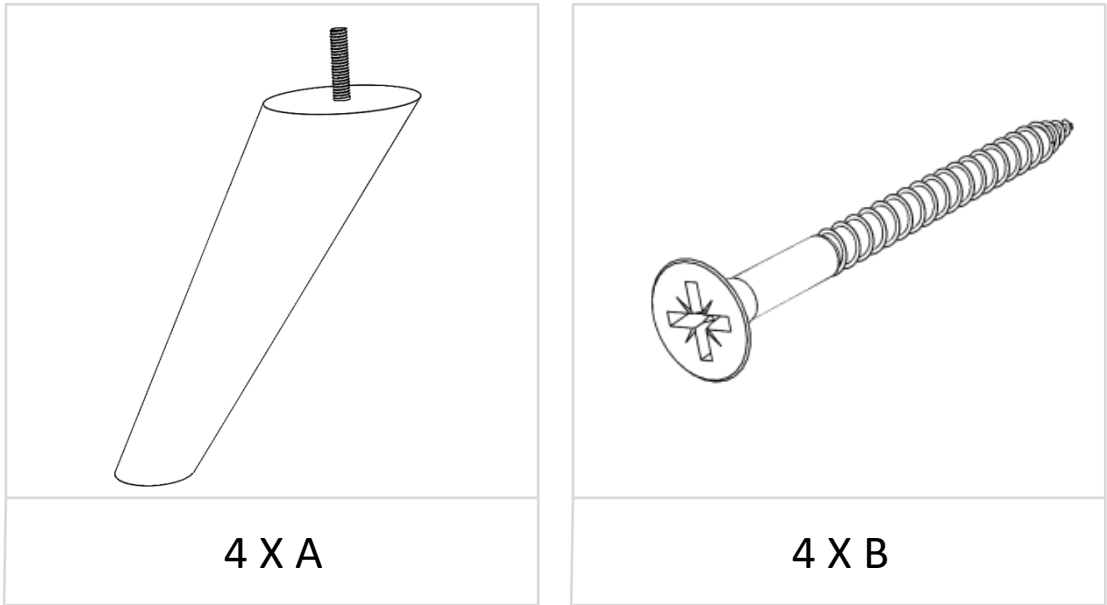
ASSEMBLY INSTRUCTIONS

**EVIE
ARMCHAIR**

EVIE OFL – 3 Seater – 2 Seater – Chair – Love Chair – Storage Stool

LIGHT

Please note this should be carried out by 2 people!



Each foot (A) requires one fixing screw (B)

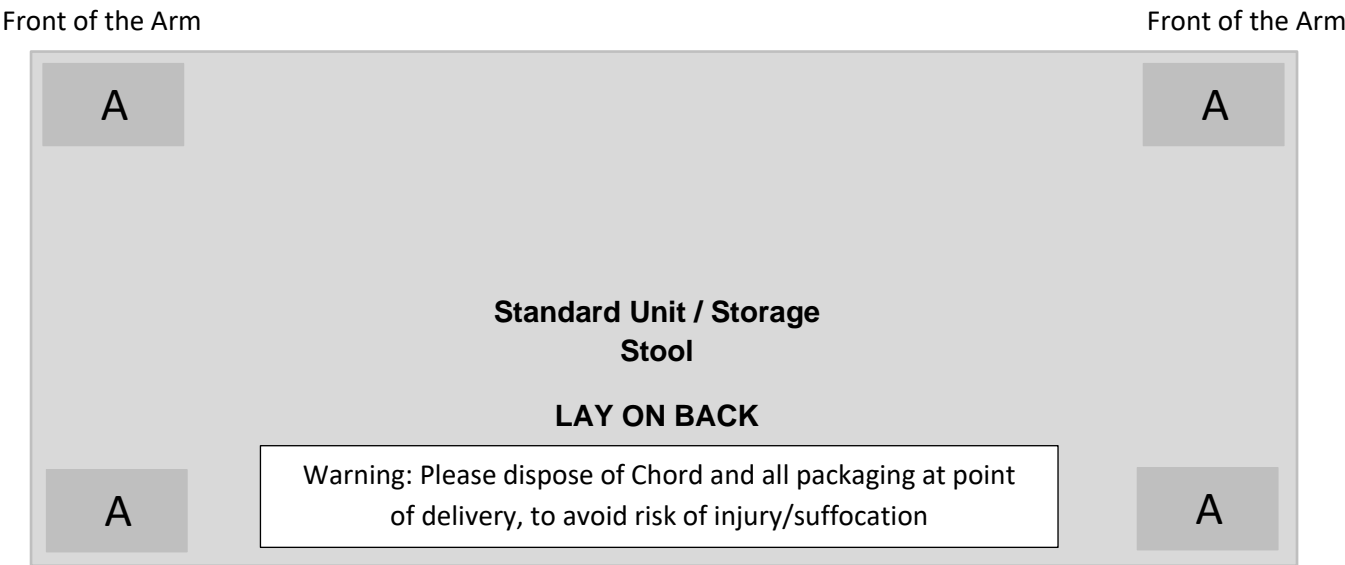


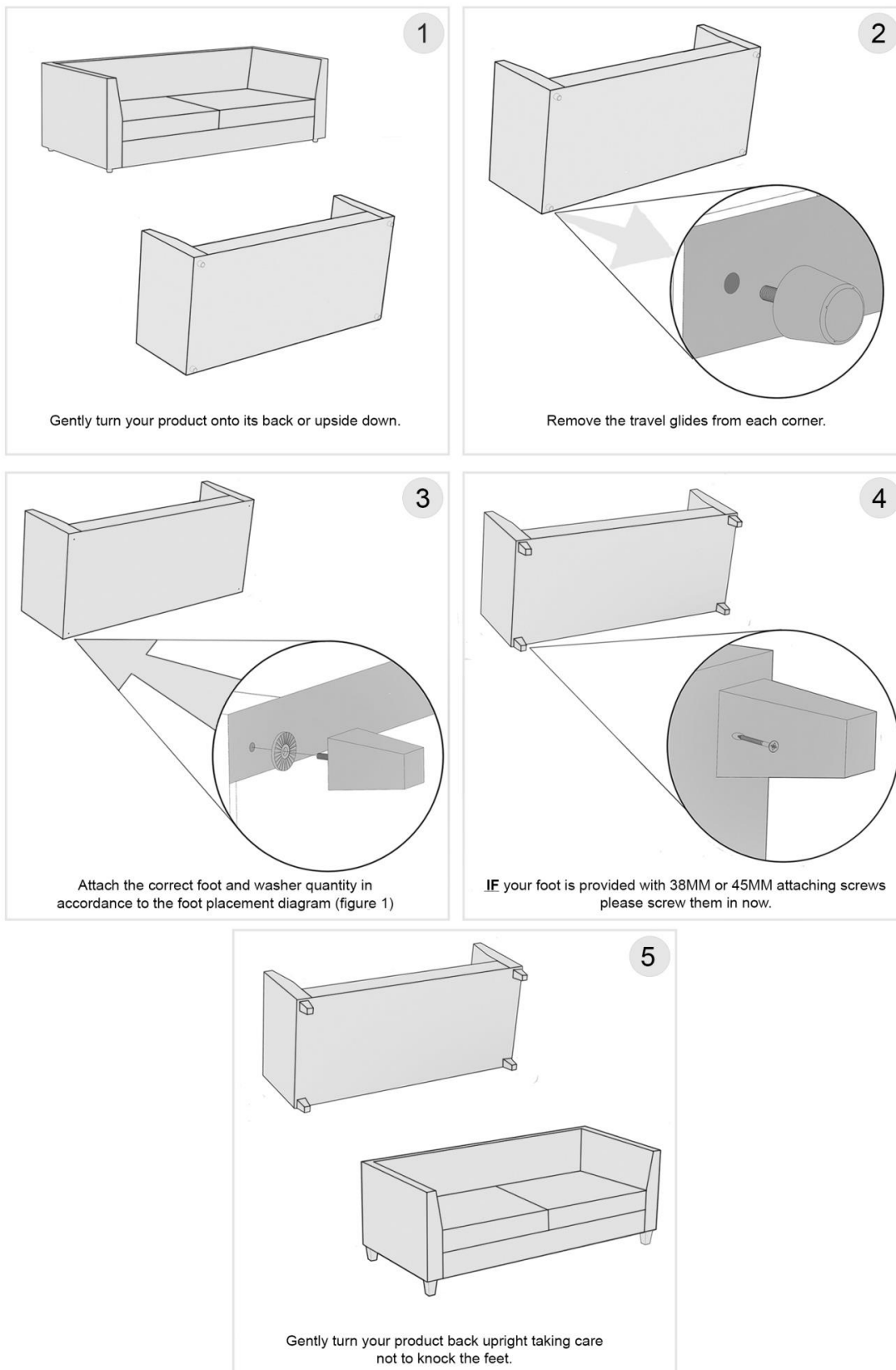
Figure 1

PLEASE TURN OVER

EVIE OFL – 3 Seater – 2 Seater – Chair – Love Chair – Storage Stool

Please note this should be carried out by 2 people!

PLEASE FOLLOW THE STEPS BELOW FOR ATTACHING YOUR FEET



PLEASE NOTE IF YOU HAVE A WOODEN OR LAMINATE FLOOR, WE WOULD ADVISE YOU TO TAKE STEPS TO PROTECT YOUR FLOOR FROM POTENTIAL SCRATCHES AND MARKS. THE EASIEST WAY IS TO PLACE PROTECTIVE PADS UNDER THE FEET OF YOUR UPHOLSTERY TO PREVENT MARKS BEING MADE OR PLACE THE UPHOLSTERY ON TOP OF A PROTECTIVE COVER. THE MANUFACTURER CANNOT BE HELD RESPONSIBLE FOR DAMAGE SUBSEQUENTLY CAUSED TO YOUR FLOORING BY NOT TAKING THE RECOMMENDED PREVENTATIVE MEASURES

PLEASE TURN OVER



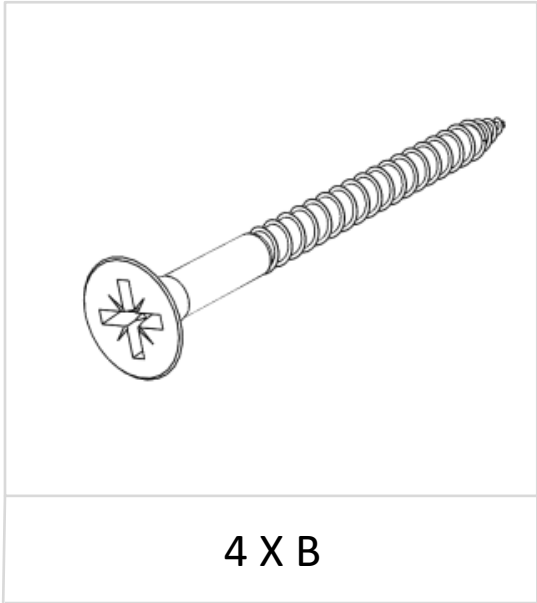
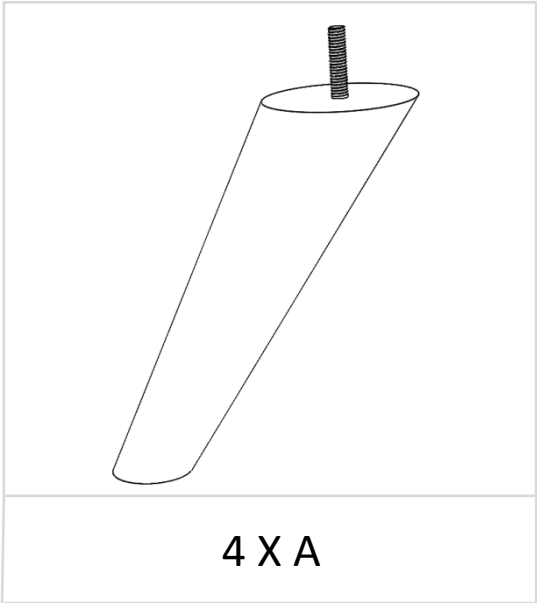
ASSEMBLY INSTRUCTIONS

**EVIE
2 SEATER SOFA**

EVIE OFL – 3 Seater – 2 Seater – Chair – Love Chair – Storage Stool

LIGHT

Please note this should be carried out by 2 people!



Each foot (A) requires one fixing screw (B)

Front of the Arm

Front of the Arm

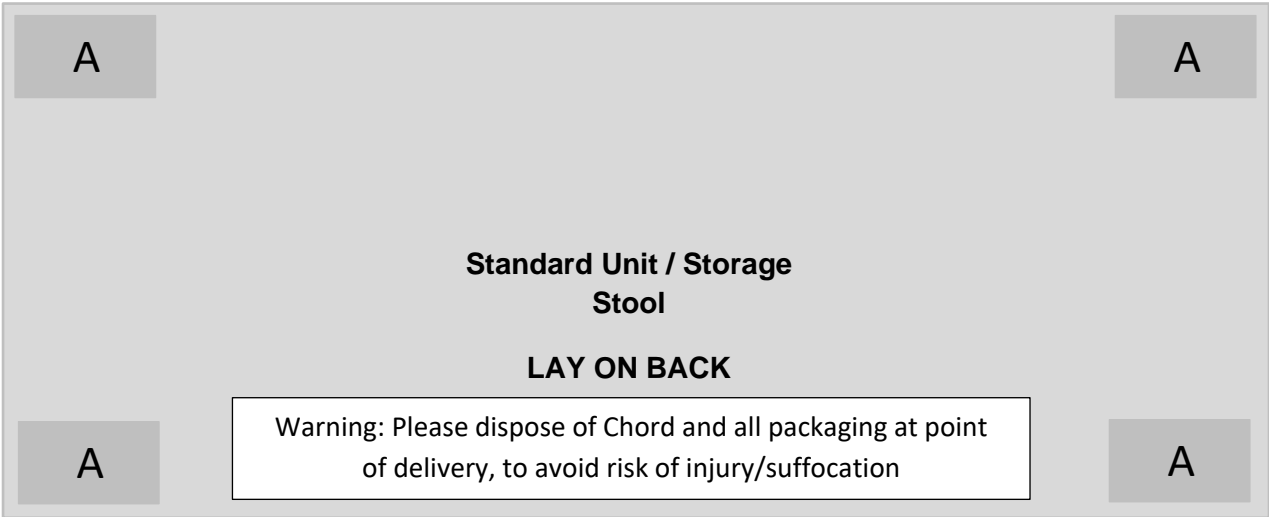


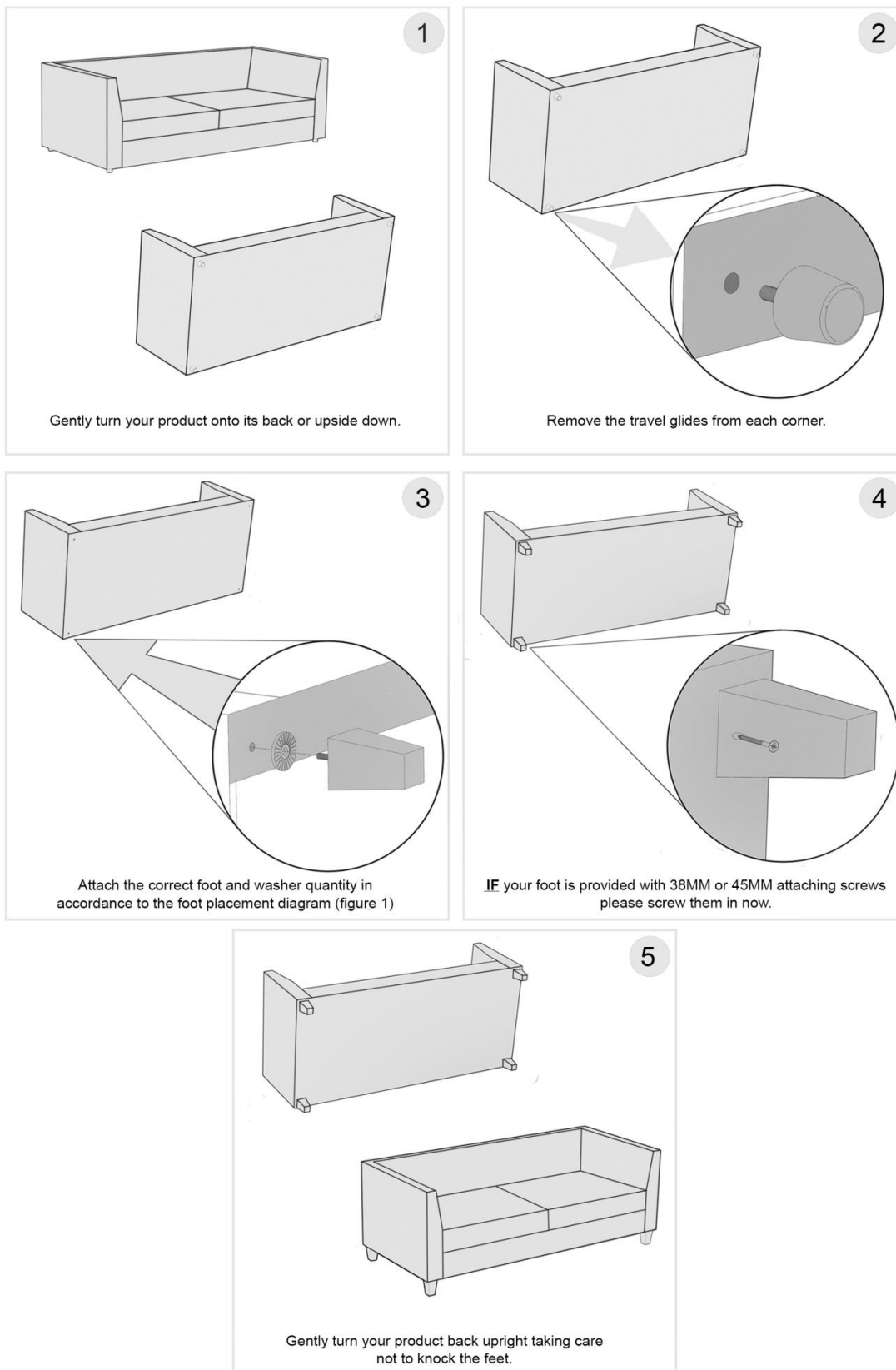
Figure 1

PLEASE TURN OVER

EVIE OFL – 3 Seater – 2 Seater – Chair – Love Chair – Storage Stool

Please note this should be carried out by 2 people!

PLEASE FOLLOW THE STEPS BELOW FOR ATTACHING YOUR FEET



PLEASE NOTE IF YOU HAVE A WOODEN OR LAMINATE FLOOR, WE WOULD ADVISE YOU TO TAKE STEPS TO PROTECT YOUR FLOOR FROM POTENTIAL SCRATCHES AND MARKS. THE EASIEST WAY IS TO PLACE PROTECTIVE PADS UNDER THE FEET OF YOUR UPHOLSTERY TO PREVENT MARKS BEING MADE OR PLACE THE UPHOLSTERY ON TOP OF A PROTECTIVE COVER. THE MANUFACTURER CANNOT BE HELD RESPONSIBLE FOR DAMAGE SUBSEQUENTLY CAUSED TO YOUR FLOORING BY NOT TAKING THE RECOMMENDED PREVENTATIVE MEASURES

PLEASE TURN OVER



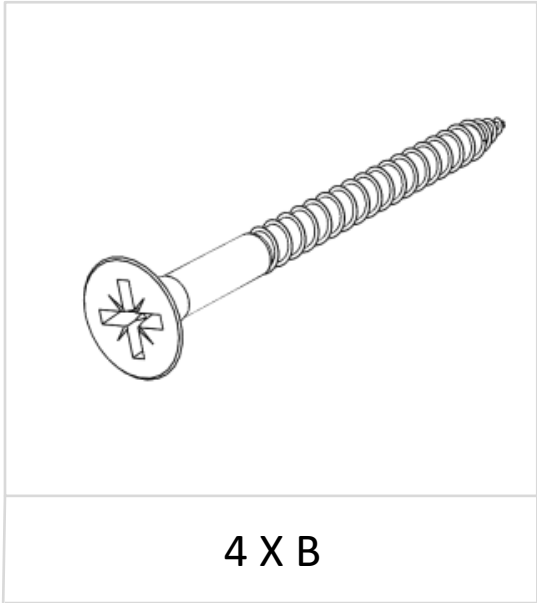
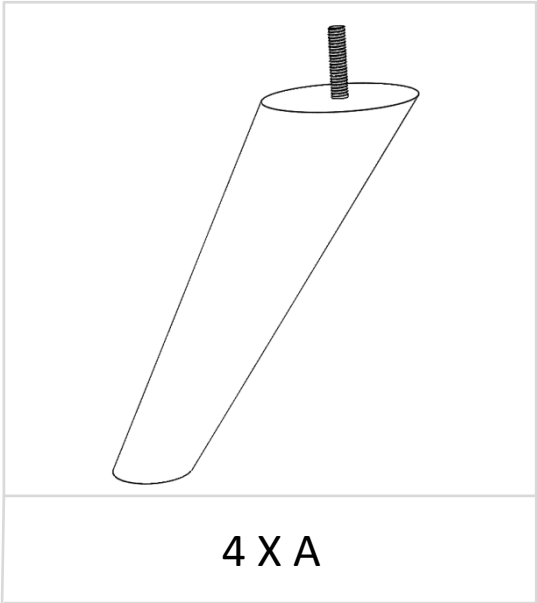
ASSEMBLY INSTRUCTIONS

**EVIE
3 SEATER SOFA**

EVIE OFL – 3 Seater – 2 Seater – Chair – Love Chair – Storage Stool

LIGHT

Please note this should be carried out by 2 people!



Each foot (A) requires one fixing screw (B)

Front of the Arm

Front of the Arm

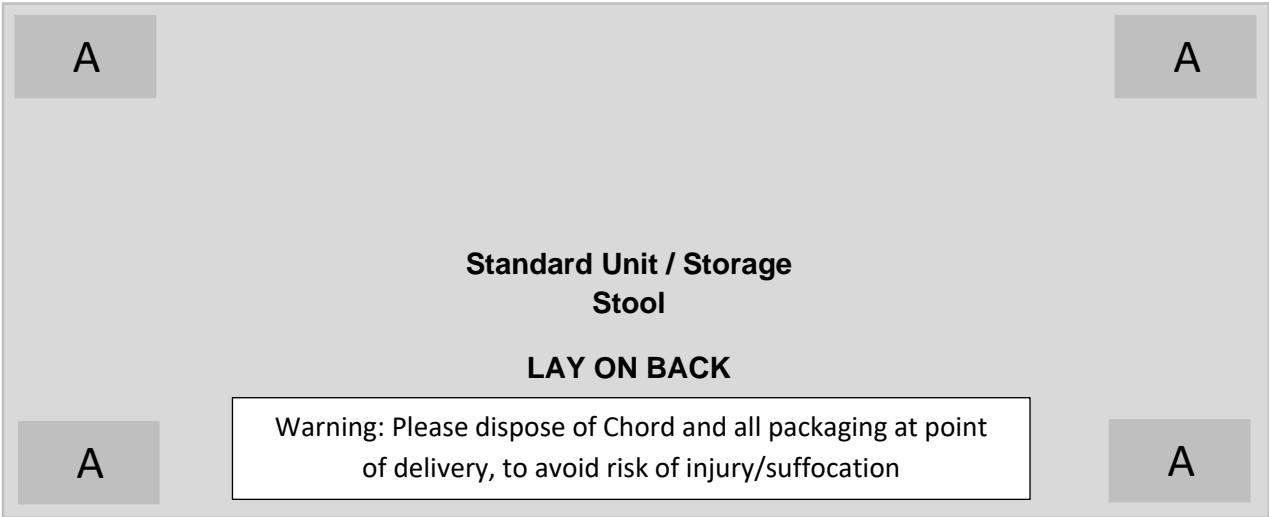


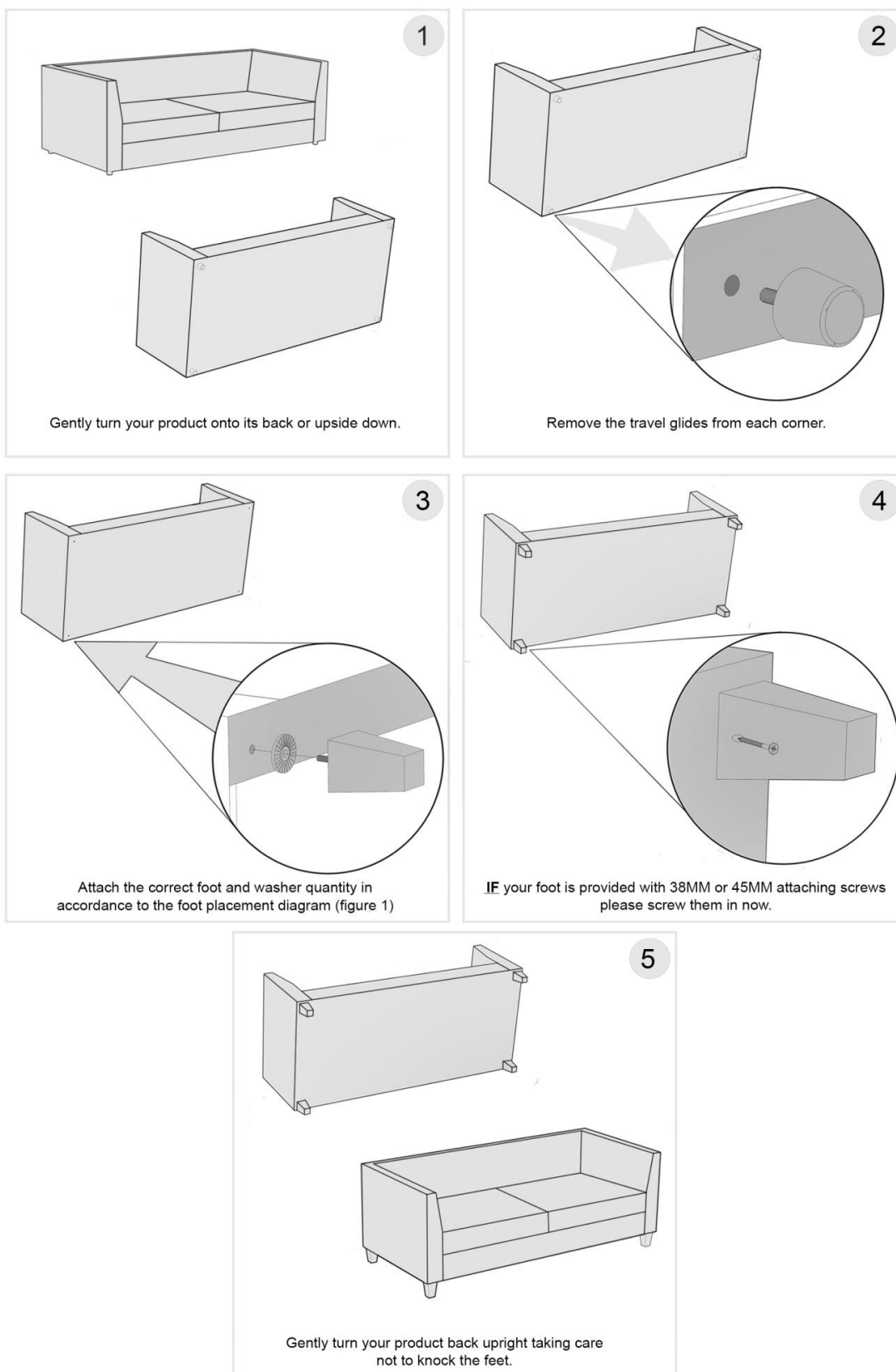
Figure 1

PLEASE TURN OVER

EVIE OFL – 3 Seater – 2 Seater – Chair – Love Chair – Storage Stool

Please note this should be carried out by 2 people!

PLEASE FOLLOW THE STEPS BELOW FOR ATTACHING YOUR FEET



PLEASE NOTE IF YOU HAVE A WOODEN OR LAMINATE FLOOR, WE WOULD ADVISE YOU TO TAKE STEPS TO PROTECT YOUR FLOOR FROM POTENTIAL SCRATCHES AND MARKS. THE EASIEST WAY IS TO PLACE PROTECTIVE PADS UNDER THE FEET OF YOUR UPHOLSTERY TO PREVENT MARKS BEING MADE OR PLACE THE UPHOLSTERY ON TOP OF A PROTECTIVE COVER. THE MANUFACTURER CANNOT BE HELD RESPONSIBLE FOR DAMAGE SUBSEQUENTLY CAUSED TO YOUR FLOORING BY NOT TAKING THE RECOMMENDED PREVENTATIVE MEASURES

PLEASE TURN OVER



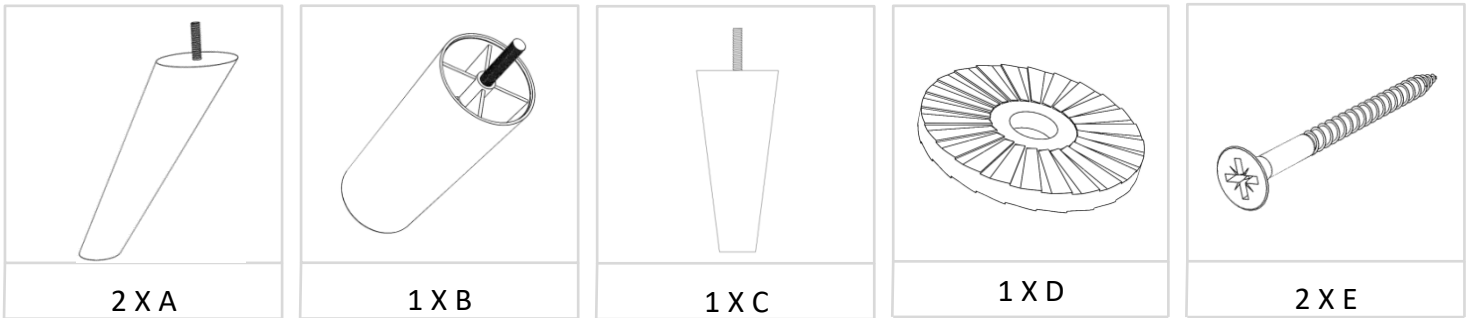
ASSEMBLY INSTRUCTIONS

**EVIE
CORNER SOFA**

EVIE OFL – 2 SEATER UNIT

LIGHT

Please note this should be carried out by 2 people!



Each Foot (A) requires one fixing screw (E)

Each Foot (B) requires one washer (D)

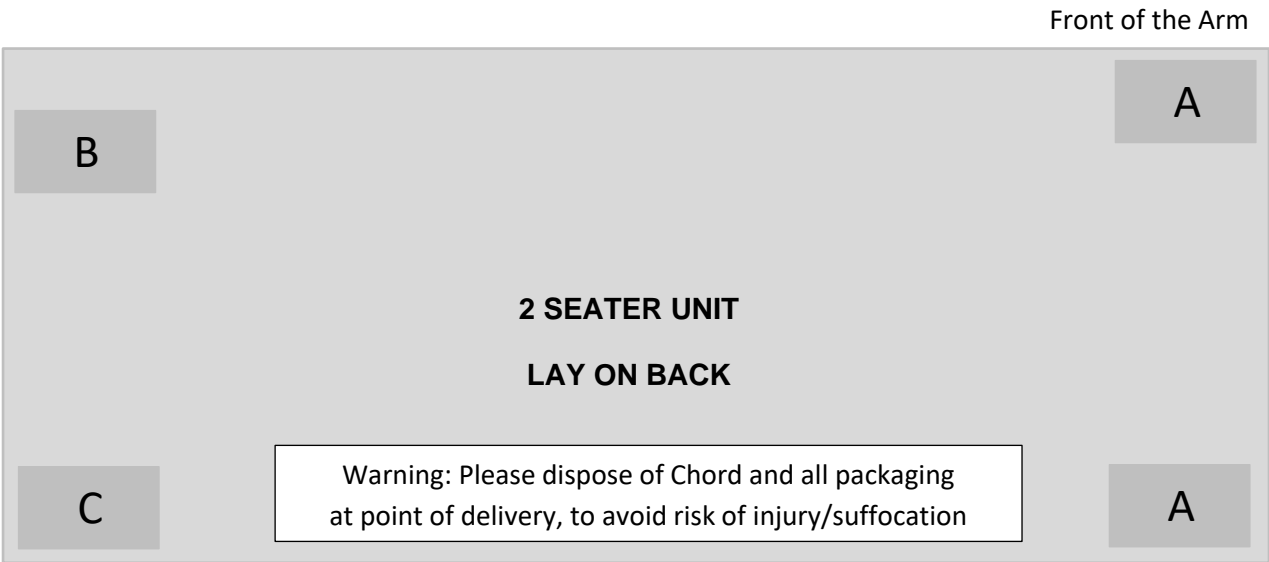


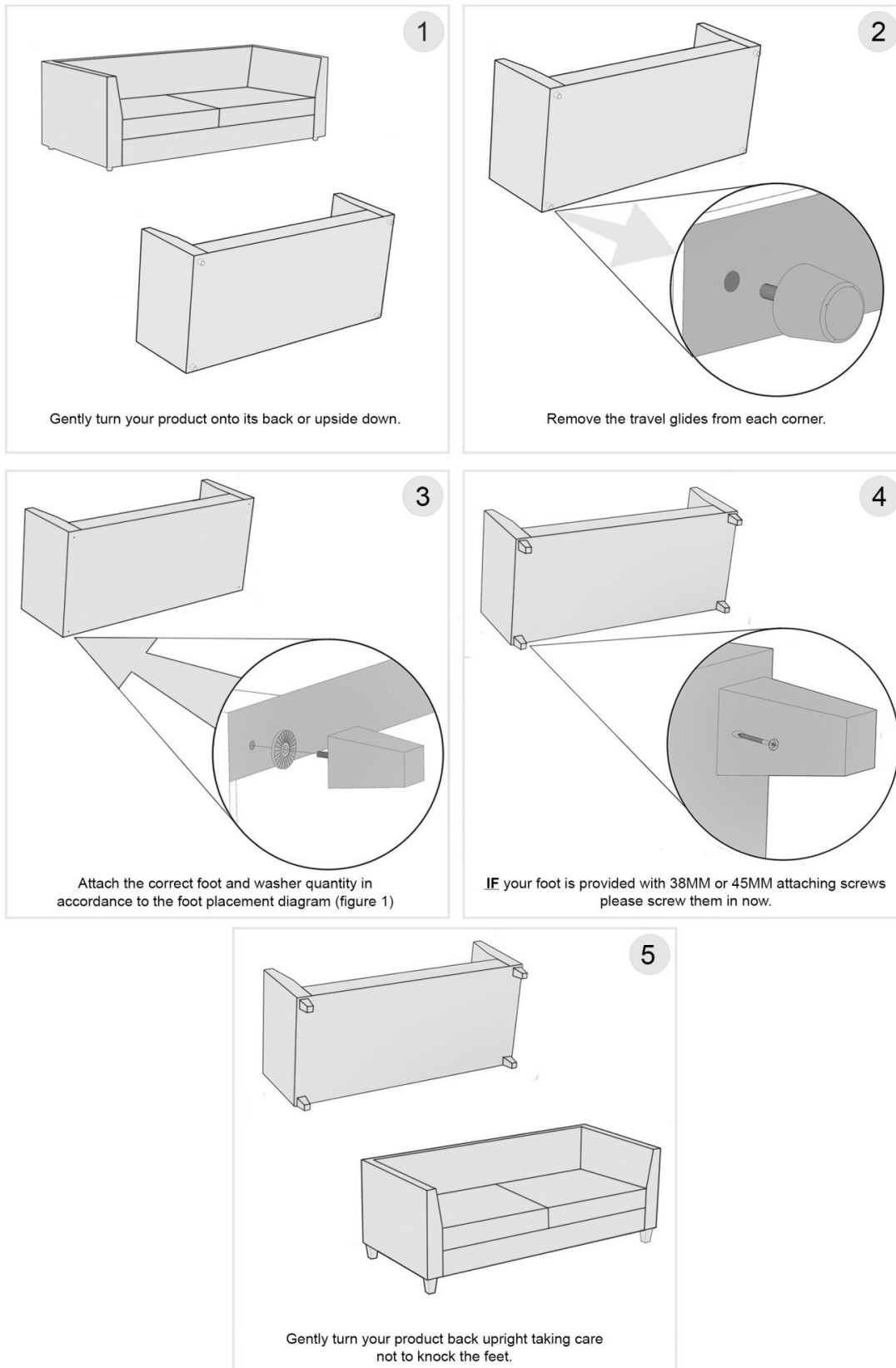
Figure 1

PLEASE TURN OVER

EVIE OFL – 2 SEATER UNIT

Please note this should be carried out by 2 people!

PLEASE FOLLOW THE STEPS BELOW FOR ATTACHING YOUR FEET



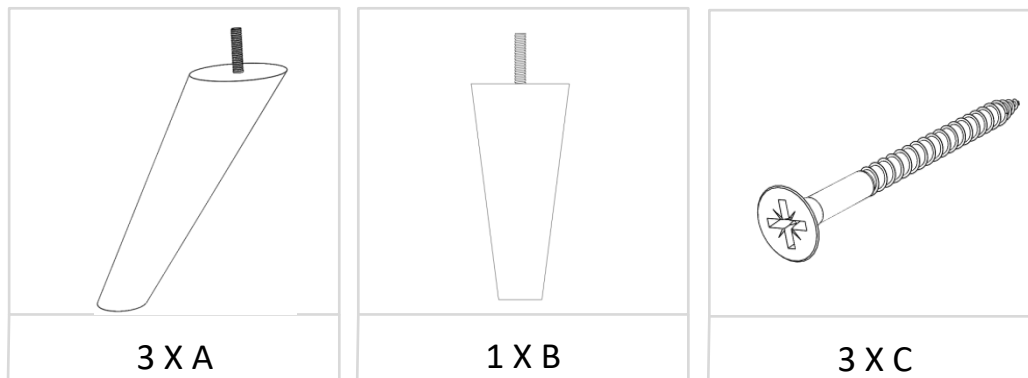
PLEASE NOTE IF YOU HAVE A WOODEN OR LAMINATE FLOOR, WE WOULD ADVISE YOU TO TAKE STEPS TO PROTECT YOUR FLOOR FROM POTENTIAL SCRATCHES AND MARKS. THE EASIEST WAY IS TO PLACE PROTECTIVE PADS UNDER THE FEET OF YOUR UPHOLSTERY TO PREVENT MARKS BEING MADE OR PLACE THE UPHOLSTERY ON TOP OF A PROTECTIVE COVER. THE MANUFACTURER CANNOT BE HELD RESPONSIBLE FOR DAMAGE SUBSEQUENTLY CAUSED TO YOUR FLOORING BY NOT TAKING THE RECOMMENDED PREVENTATIVE MEASURES

PLEASE TURN OVER

EVIE OFL – Chaise

LIGHT

Please note this should be carried out by 2 people!



Each Foot (A) requires one fixing screw (C)

Front of the Arm

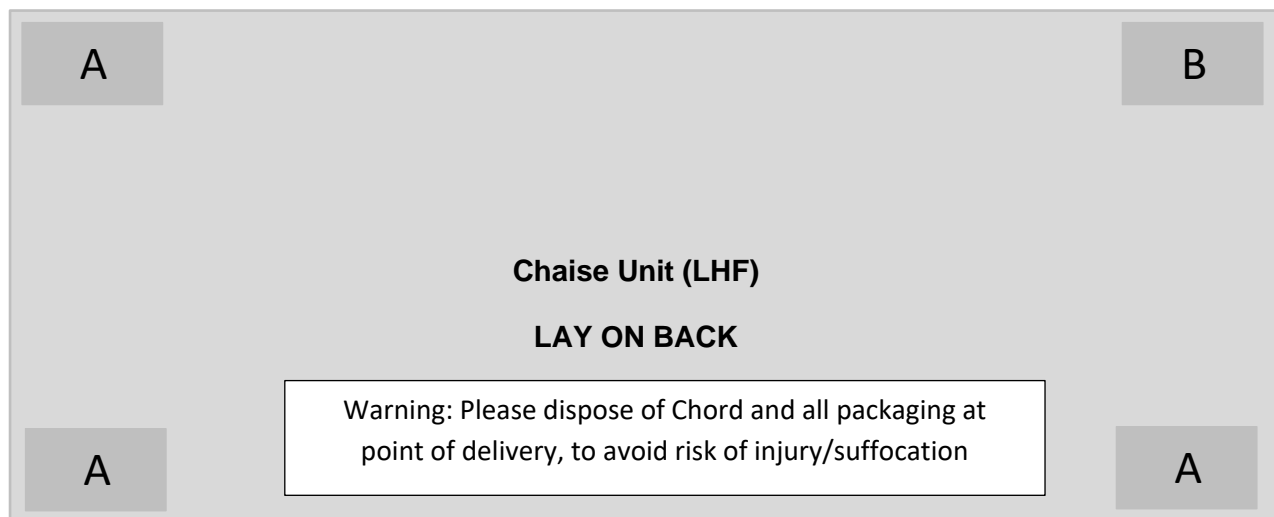


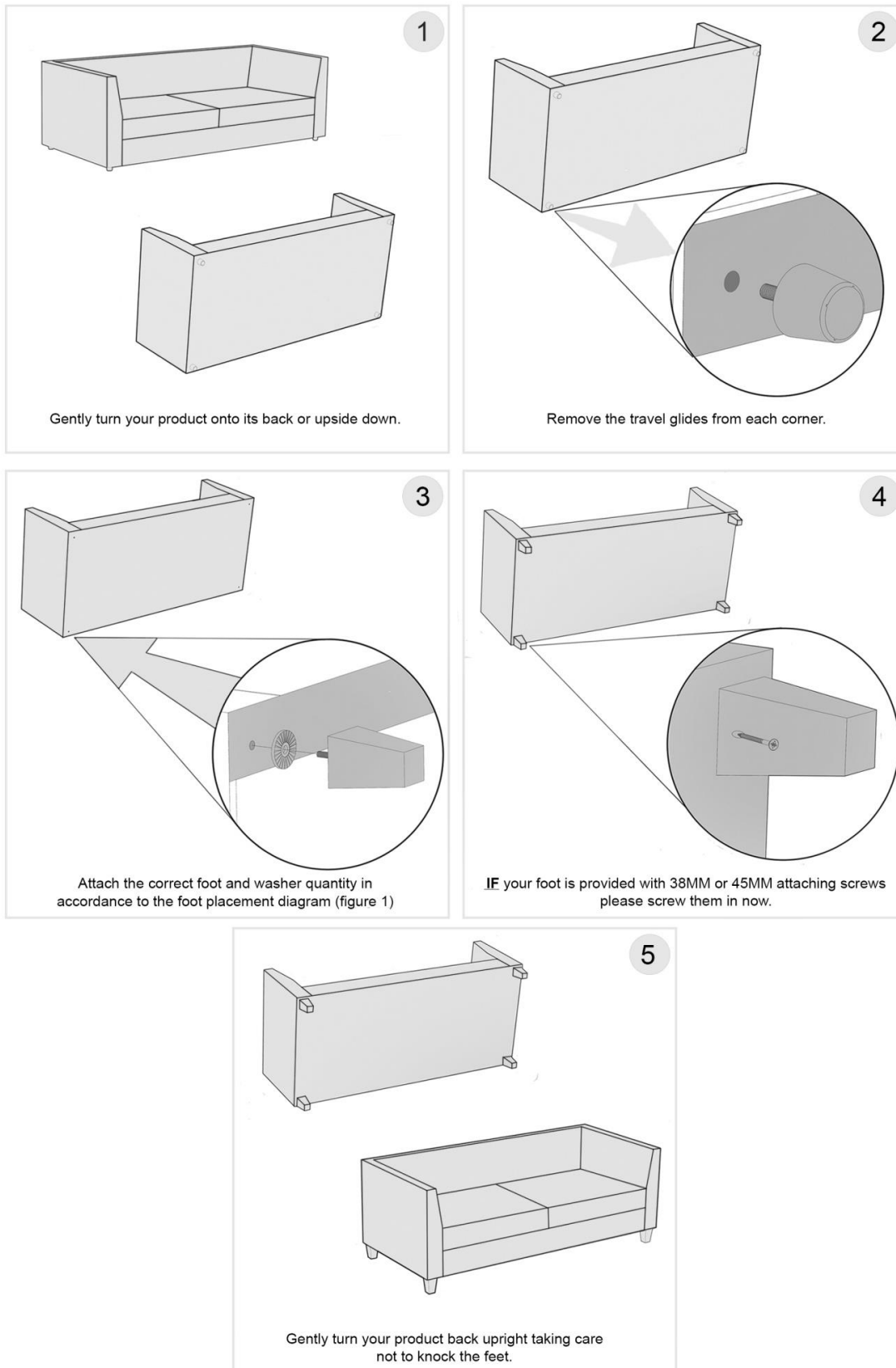
Figure 1

PLEASE TURN OVER

EVIE OFL – Chaise

Please note this should be carried out by 2 people!

PLEASE FOLLOW THE STEPS BELOW FOR ATTACHING YOUR FEET



PLEASE NOTE IF YOU HAVE A WOODEN OR LAMINATE FLOOR, WE WOULD ADVISE YOU TO TAKE STEPS TO PROTECT YOUR FLOOR FROM POTENTIAL SCRATCHES AND MARKS. THE EASIEST WAY IS TO PLACE PROTECTIVE PADS UNDER THE FEET OF YOUR UPHOLSTERY TO PREVENT MARKS BEING MADE OR PLACE THE UPHOLSTERY ON TOP OF A PROTECTIVE COVER. THE MANUFACTURER CANNOT BE HELD RESPONSIBLE FOR DAMAGE SUBSEQUENTLY CAUSED TO YOUR FLOORING BY NOT TAKING THE RECOMMENDED PREVENTATIVE MEASURES

PLEASE TURN OVER



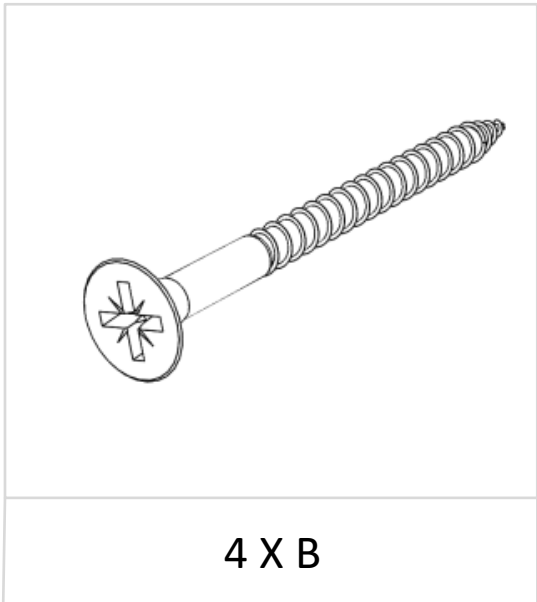
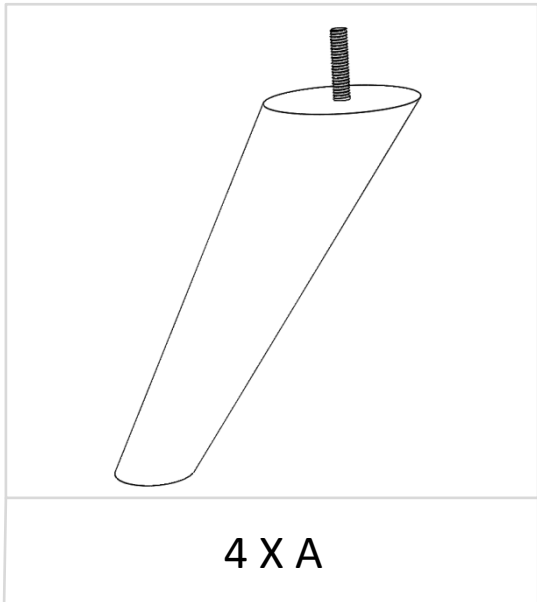
ASSEMBLY INSTRUCTIONS

**EVIE
LOVESEAT**

EVIE OFL – 3 Seater – 2 Seater – Chair – Love Chair – Storage Stool

LIGHT

Please note this should be carried out by 2 people!



Each foot (A) requires one fixing screw (B)

Front of the Arm

Front of the Arm

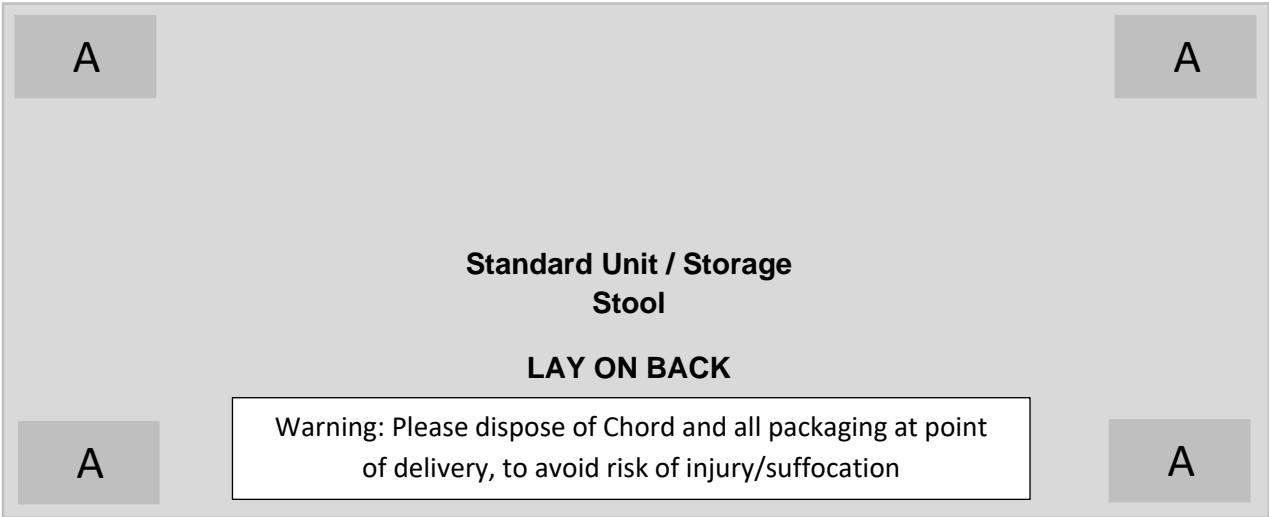


Figure 1

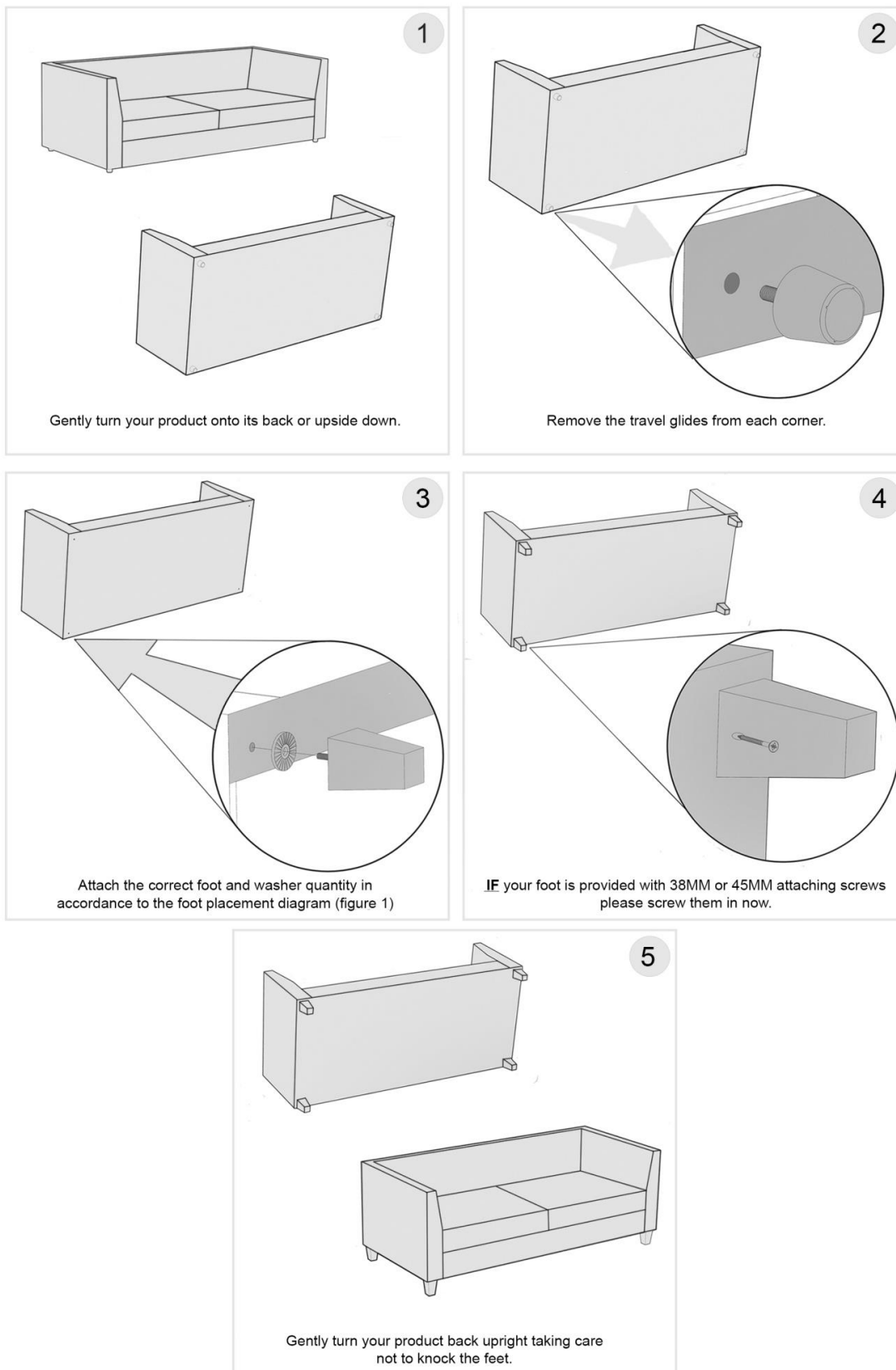
PLEASE TURN OVER

EVIE OFL – 3 Seater – 2 Seater – Chair – Love

Chair – Storage Stool

Please note this should be carried out by 2 people!

PLEASE FOLLOW THE STEPS BELOW FOR ATTACHING YOUR FEET



PLEASE NOTE IF YOU HAVE A WOODEN OR LAMINATE FLOOR, WE WOULD ADVISE YOU TO TAKE STEPS TO PROTECT YOUR FLOOR FROM POTENTIAL SCRATCHES AND MARKS. THE EASIEST WAY IS TO PLACE PROTECTIVE PADS UNDER THE FEET OF YOUR UPHOLSTERY TO PREVENT MARKS BEING MADE OR PLACE THE UPHOLSTERY ON TOP OF A PROTECTIVE COVER. THE MANUFACTURER CANNOT BE HELD RESPONSIBLE FOR DAMAGE SUBSEQUENTLY CAUSED TO YOUR FLOORING BY NOT TAKING THE RECOMMENDED PREVENTATIVE MEASURES

PLEASE TURN OVER



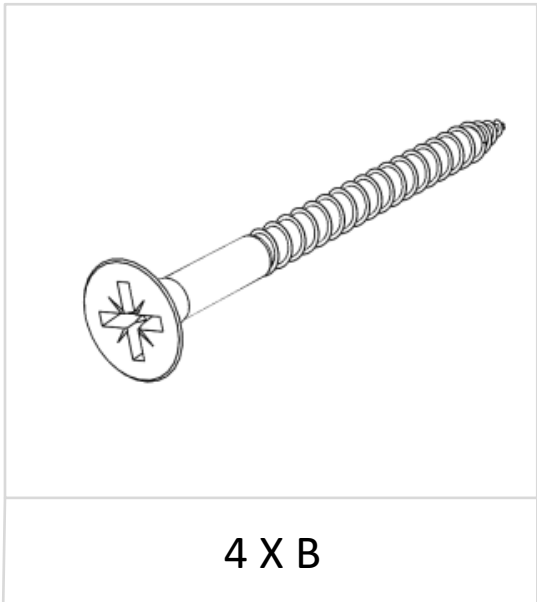
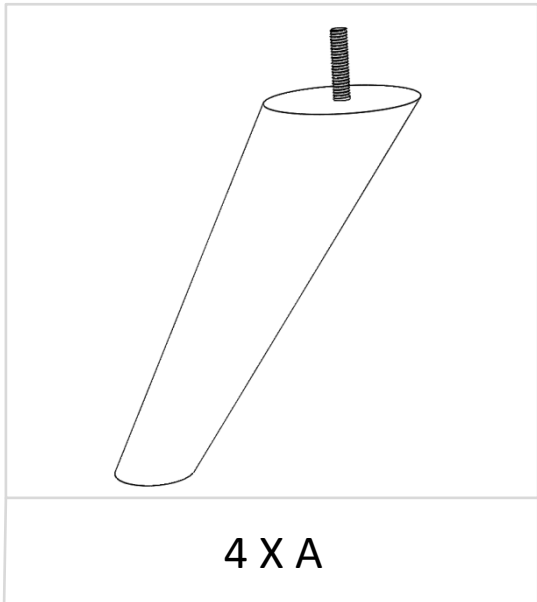
ASSEMBLY INSTRUCTIONS

**EVIE
FOOTSTOOL**

EVIE OFL – 3 Seater – 2 Seater – Chair – Love Chair – Storage Stool

LIGHT

Please note this should be carried out by 2 people!



Each foot (A) requires one fixing screw (B)

Front of the Arm

Front of the Arm

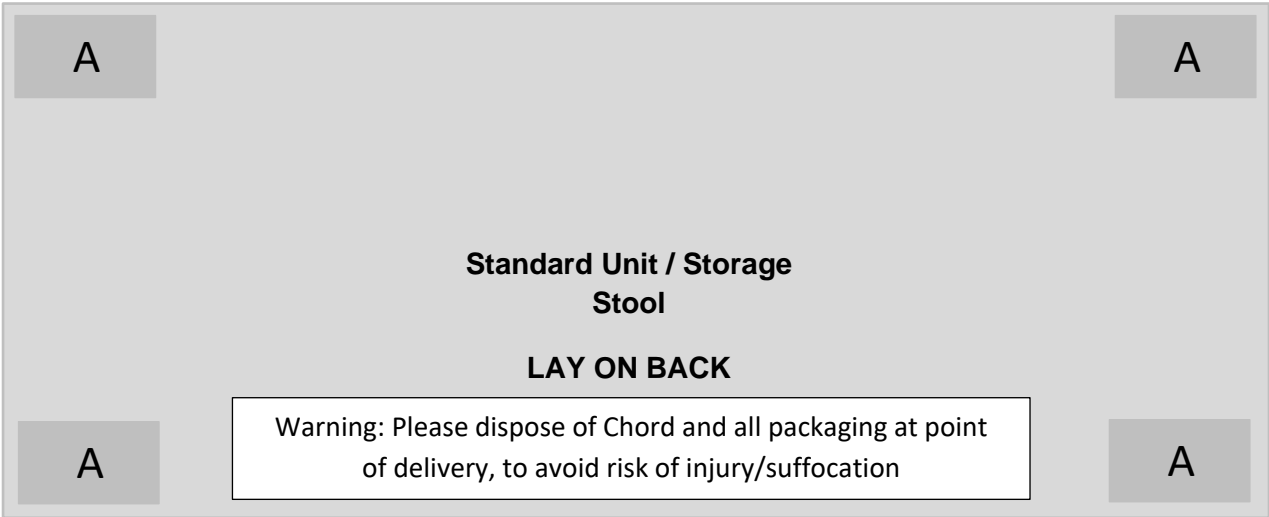


Figure 1

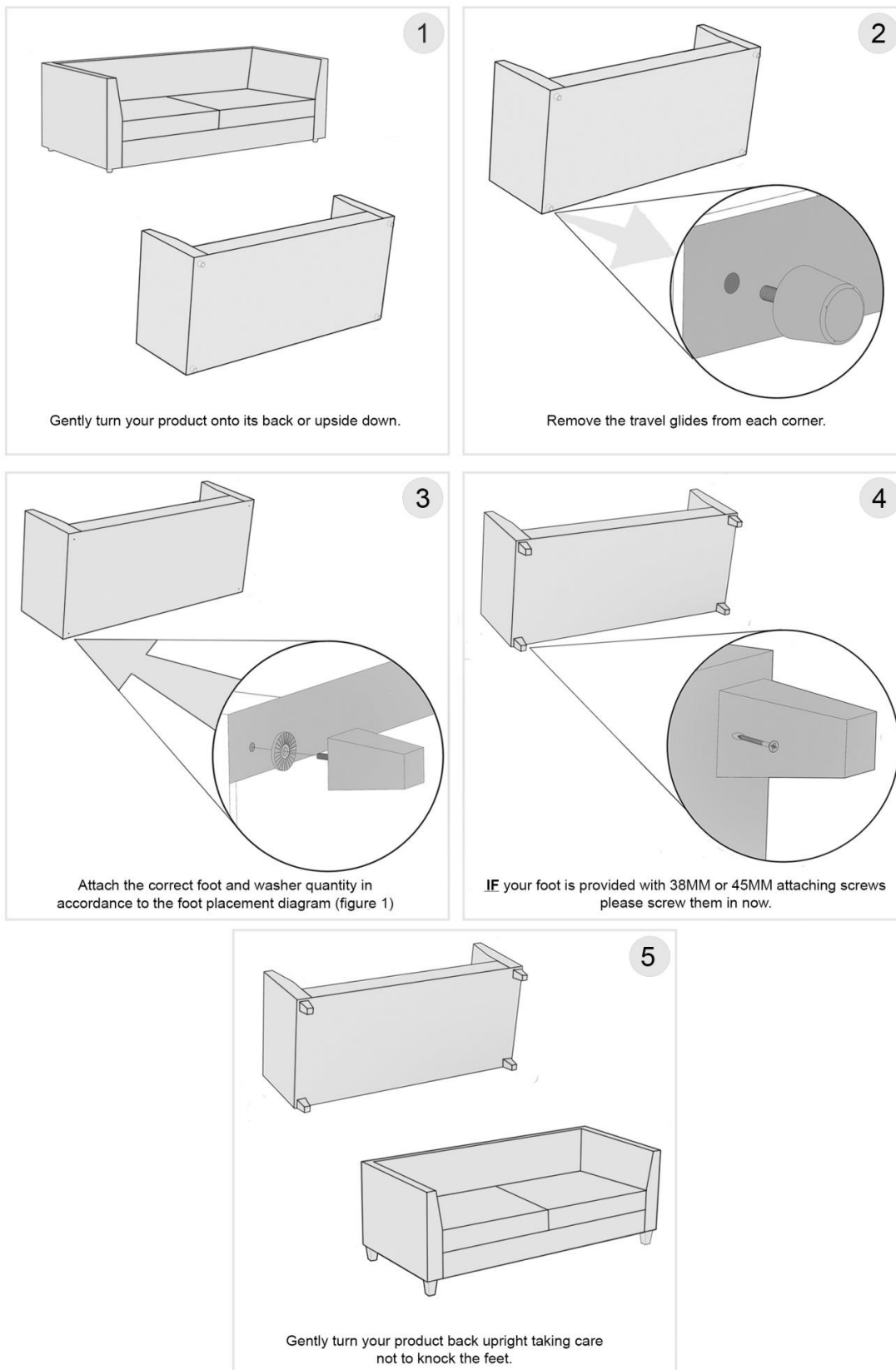
PLEASE TURN OVER

EVIE OFL – 3 Seater – 2 Seater – Chair – Love

Chair – Storage Stool

Please note this should be carried out by 2 people!

PLEASE FOLLOW THE STEPS BELOW FOR ATTACHING YOUR FEET



PLEASE NOTE IF YOU HAVE A WOODEN OR LAMINATE FLOOR, WE WOULD ADVISE YOU TO TAKE STEPS TO PROTECT YOUR FLOOR FROM POTENTIAL SCRATCHES AND MARKS. THE EASIEST WAY IS TO PLACE PROTECTIVE PADS UNDER THE FEET OF YOUR UPHOLSTERY TO PREVENT MARKS BEING MADE OR PLACE THE UPHOLSTERY ON TOP OF A PROTECTIVE COVER. THE MANUFACTURER CANNOT BE HELD RESPONSIBLE FOR DAMAGE SUBSEQUENTLY CAUSED TO YOUR FLOORING BY NOT TAKING THE RECOMMENDED PREVENTATIVE MEASURES

PLEASE TURN OVER