



ASSEMBLY INSTRUCTIONS

**JENSEN
ARMCHAIR**

JENSEN FOOT FITTING INSTRUCTIONS

FURNITURE IS HEAVY, MOVING OR LIFTING SHOULD NOT BE ATTEMPTED ON YOUR OWN

1. CAREFULLY PLACE SOFA ON ITS BACK.

2. REMOVE ALL TRAVEL GLIDES.

3. SCREW FOOT IN TIGHTLY AS SHOWN IN DIAGRAM.

4. SCREW IN THE SCREW WITH SERRATED WASHER TIGHTLY AS SHOWN IN DIAGRAM.

5. VIEW OF THE FEET ATTACHED IN THE CORRECT POSITION.

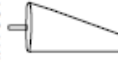
x4 SCREWS (40mm CROSS HEAD)



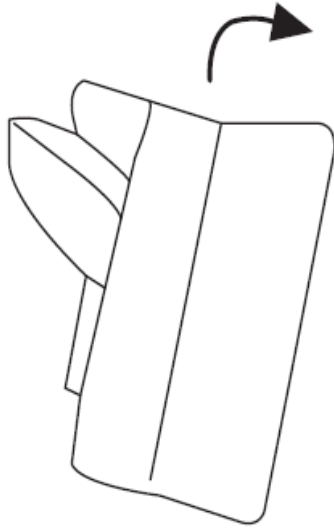
4 x SERRATED WASHER



28809 x4 FOOT



1.

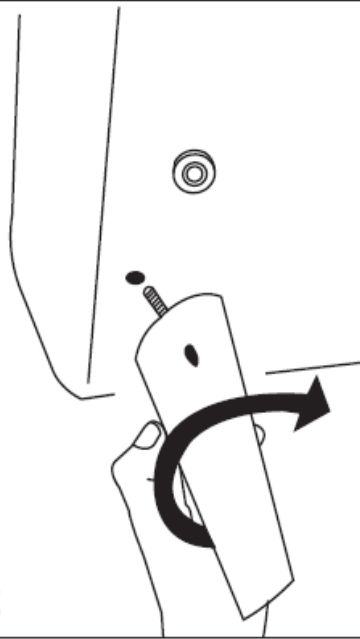


2.

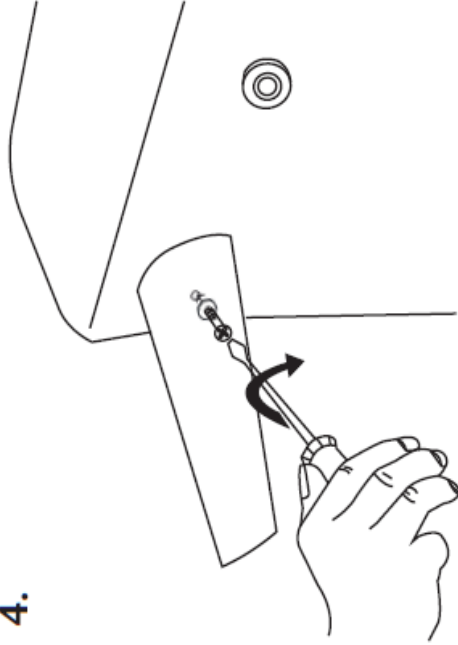


Remove 70mm Travel Glide - 43033

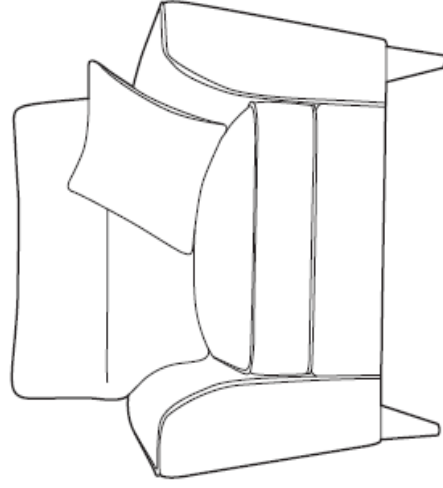
3.



4.



5.



Feet attached in the correct position



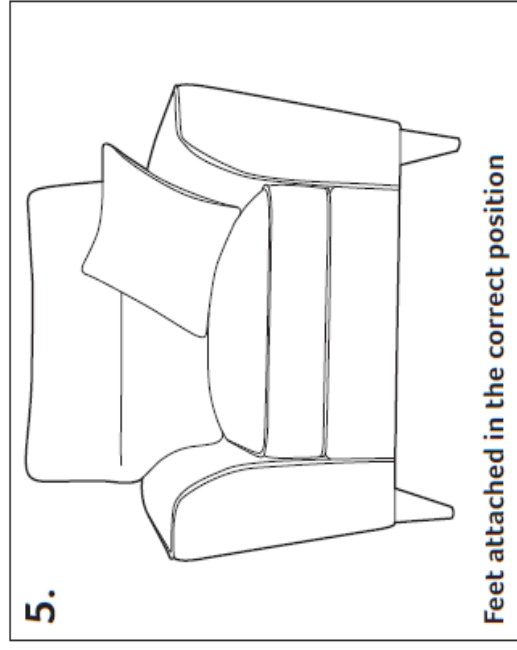
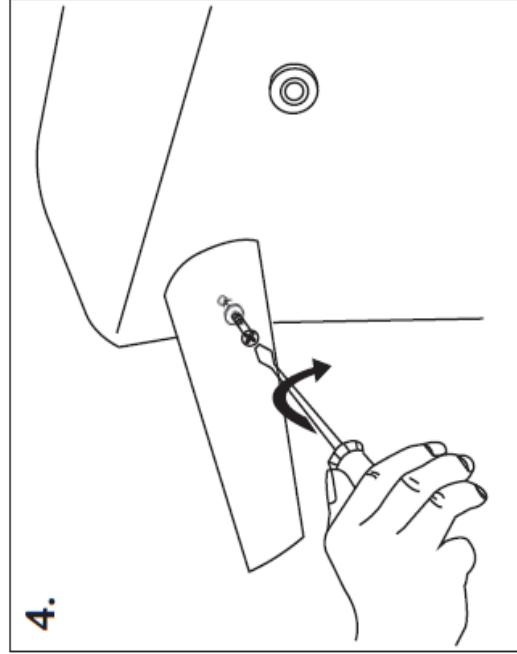
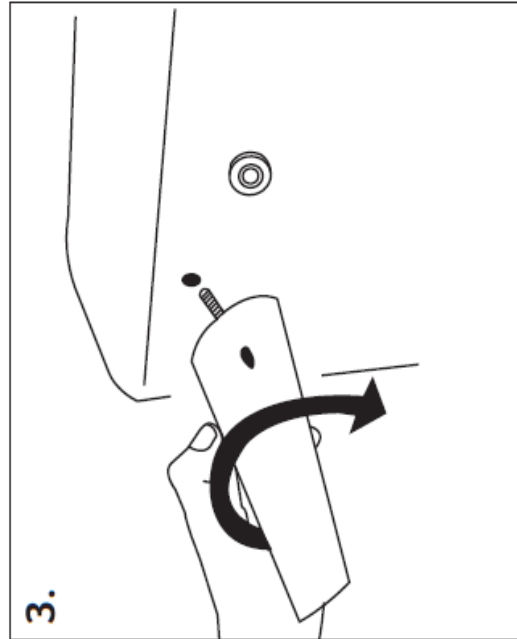
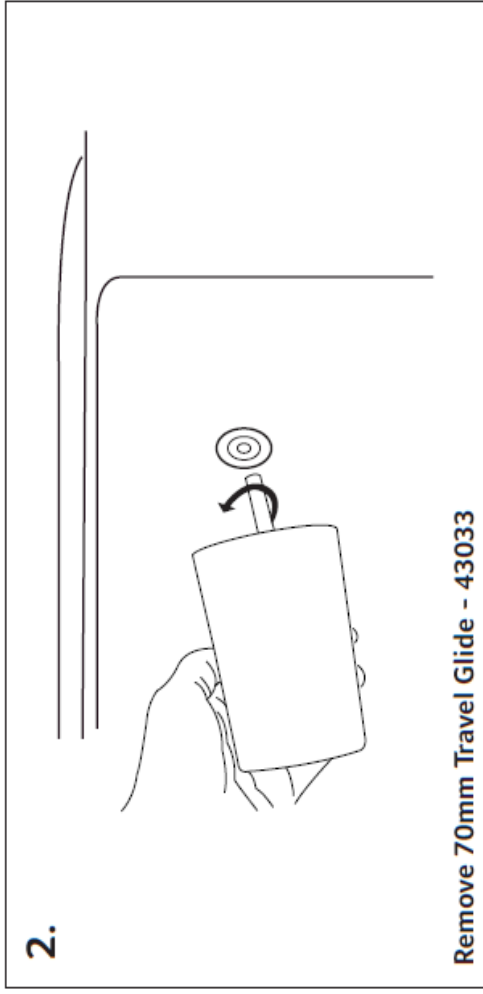
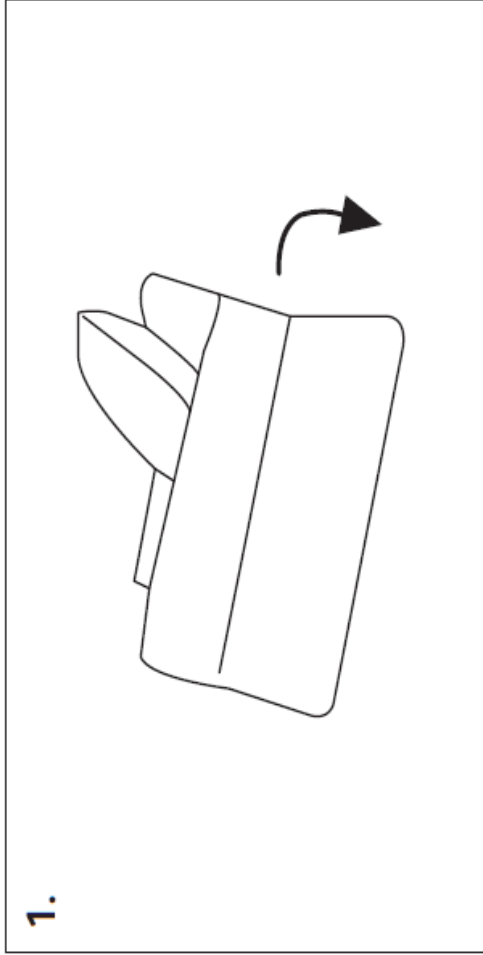
ASSEMBLY INSTRUCTIONS

**JENSEN
2 SEATER SOFA**

JENSEN FOOT FITTING INSTRUCTIONS

FURNITURE IS HEAVY, MOVING OR LIFTING SHOULD NOT BE ATTEMPTED ON YOUR OWN

1. CAREFULLY PLACE SOFA ON ITS BACK.
2. REMOVE ALL TRAVEL GLIDES.
3. SCREW FOOT IN TIGHTLY AS SHOWN IN DIAGRAM.
4. SCREW IN THE SCREW WITH SERRATED WASHER TIGHTLY AS SHOWN IN DIAGRAM.
5. VIEW OF THE FEET ATTACHED IN THE CORRECT POSITION.





ASSEMBLY INSTRUCTIONS

**JENSEN
3 SEATER SOFA**

JENSEN FOOT FITTING INSTRUCTIONS

FURNITURE IS HEAVY, MOVING OR LIFTING SHOULD NOT BE ATTEMPTED ON YOUR OWN

1. CAREFULLY PLACE SOFA ON ITS BACK.

2. REMOVE ALL TRAVEL GLIDES.

3. SCREW FOOT IN TIGHTLY AS SHOWN IN DIAGRAM.

4. SCREW IN THE SCREW WITH SERRATED WASHER TIGHTLY AS SHOWN IN DIAGRAM.

5. VIEW OF THE FEET ATTACHED IN THE CORRECT POSITION.

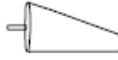
x4 SCREWS (40mm CROSS HEAD)



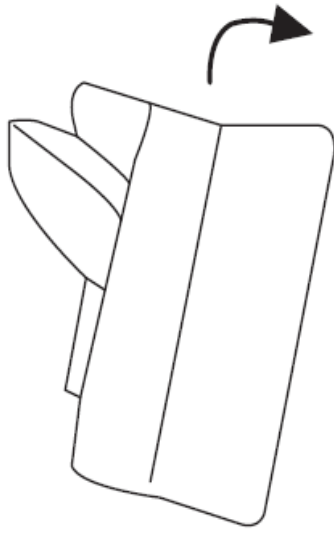
4 x SERRATED WASHER



28809 x4 FOOT



1.

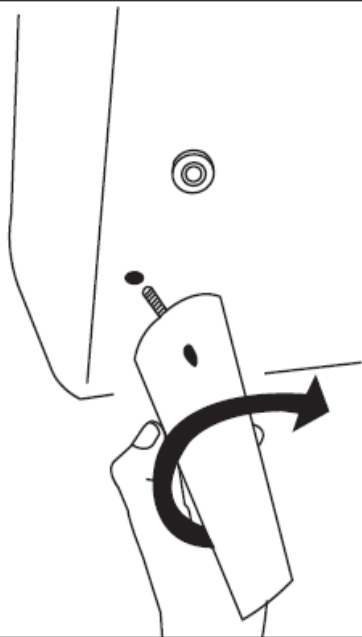


2.

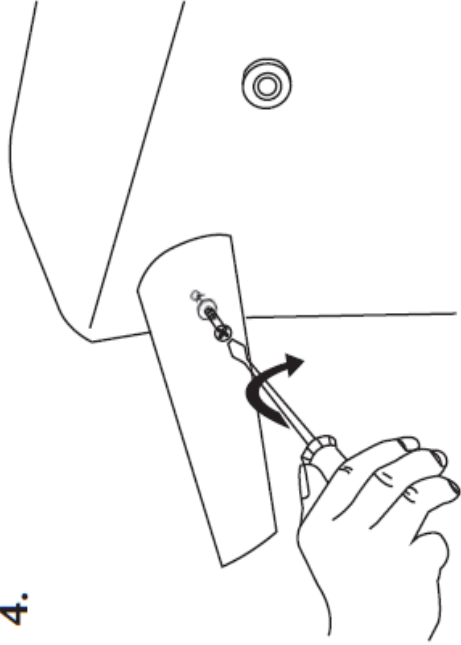


Remove 70mm Travel Glide - 43033

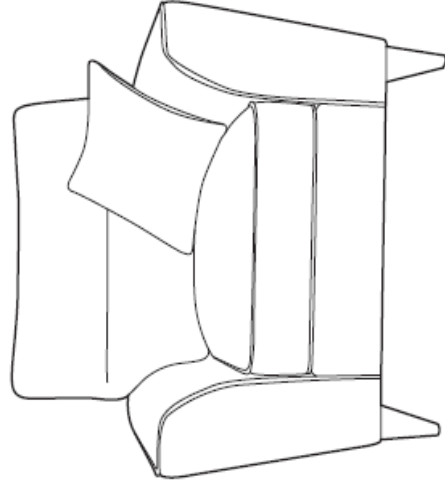
3.



4.



5.



Feet attached in the correct position



ASSEMBLY INSTRUCTIONS

**JENSEN
CORNER SOFA**

MODULAR UNITS - CLIPPING INSTRUCTIONS

FURNITURE IS HEAVY, MOVING OR LIFTING SHOULD NOT BE ATTEMPTED ON YOUR OWN

TO UNCLIP YOUR UNITS PLEASE SKIP TO STAGE 4

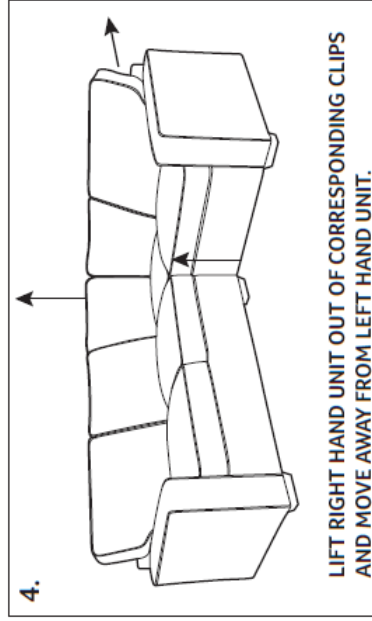
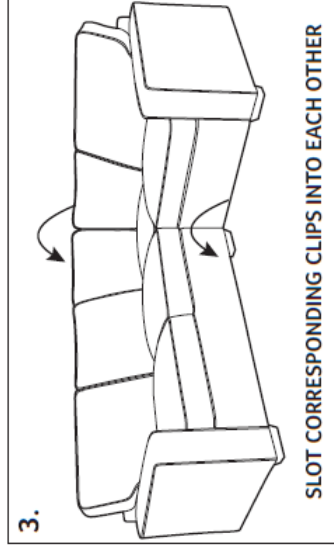
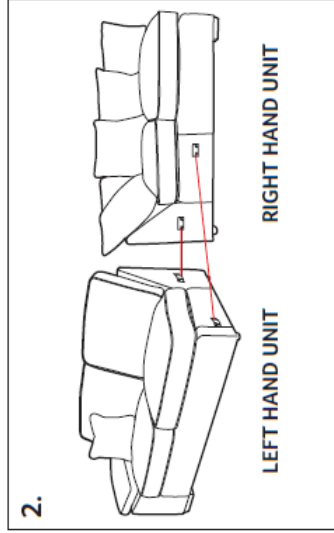
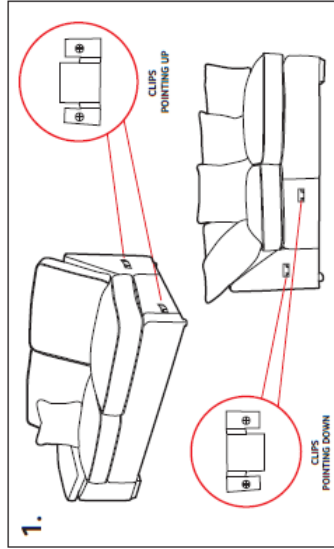
1. THERE ARE 2 SETS OF CLIPS ON YOUR MODULAR UNITS: CLIPS POINTING UP ARE ON LEFT HAND UNITS AND CLIPS POINTING DOWN ARE ON RIGHT HAND UNITS. LOCATE THESE CLIPS ON YOUR FURNITURE. LEFT AND RIGHT UNITS SHOWN BELOW.

2. LINE UP CORRESPONDING UPWARDS AND DOWNWARDS POINTING CLIPS BY PUSHING UNITS CLOSE TOGETHER.

ALWAYS MOVE AND LIFT FURNITURE WITH ANOTHER PERSON, NEVER ON YOUR OWN

3. LIFT RIGHT HAND UNIT AND SLOT DOWNWARDS CLIPS INTO UPWARDS CLIPS ON LEFT HAND UNIT. ALL FEET SHOULD BE LEVEL ON THE FLOOR WHEN FITTED CORRECTLY.

4. TO UNCLIP UNITS GENTLY LIFT THE RIGHT HAND UNIT OUT OF THE LEFT HAND CLIPS AND MOVE AWAY FROM OPPOSING UNIT.



LIFT RIGHT HAND UNIT OUT OF CORRESPONDING CLIPS AND MOVE AWAY FROM LEFT HAND UNIT.

EFFECTIVE FROM PRODUCTION DATE 18/08/2020

Part number: SU-062319