



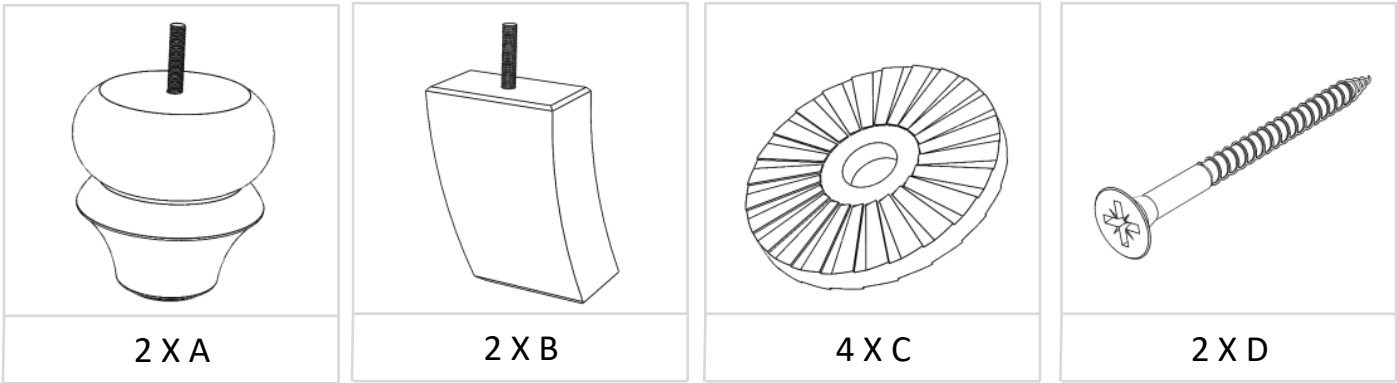
# **ASSEMBLY INSTRUCTIONS**

**GAINSBOROUGH  
2 SEATER SOFA**

# GAINSBOROUGH – 3 SEATER – 2 SEATER – LOVE CHAIR

## OAK EFFECT

Please note this should be carried out by 2 people!



Each foot (A,B) requires one washer (C)

Each foot (B) requires one fixing screw (D)

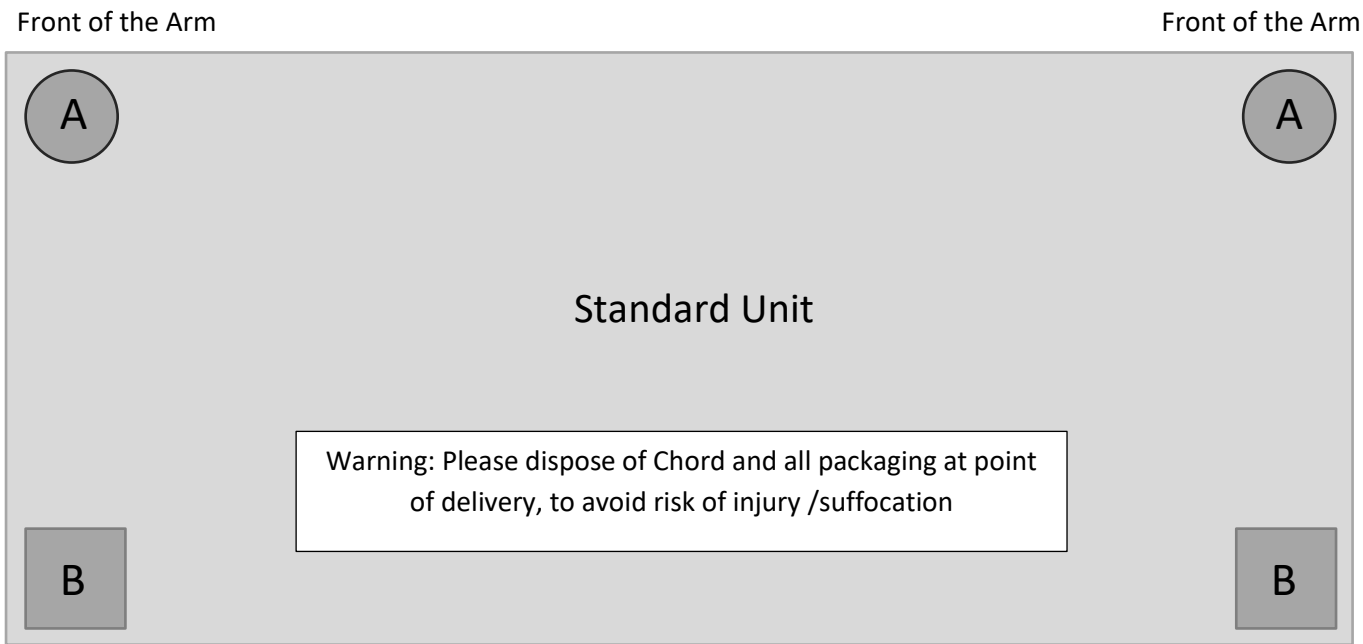


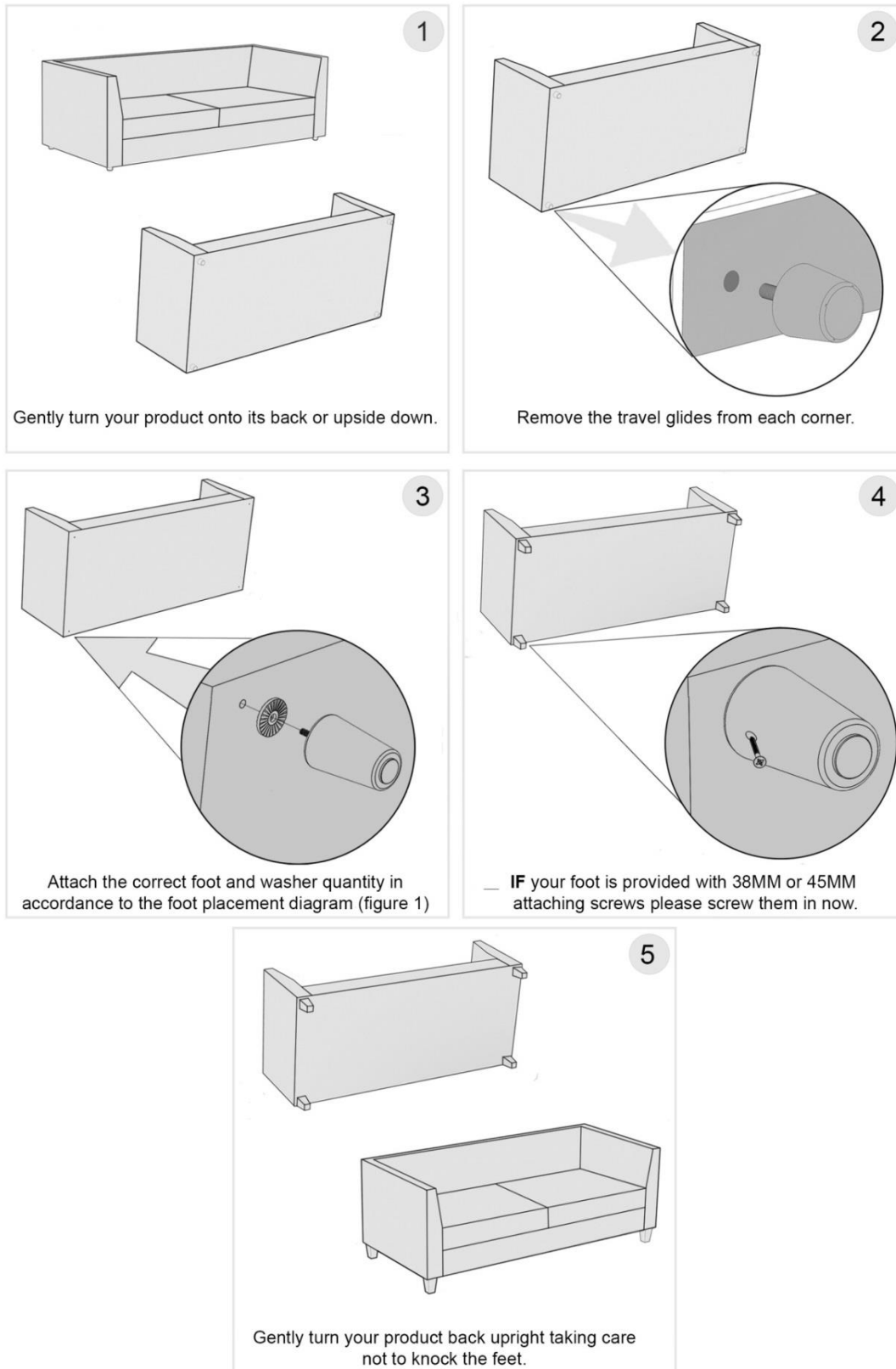
Figure 1

PLEASE TURN OVER

# GAINSBOROUGH – 3 SEATER – 2 SEATER – LOVE CHAIR

Please note this should be carried out by 2 people!

PLEASE FOLLOW THE STEPS BELOW FOR ATTACHING YOUR FEET



PLEASE NOTE IF YOU HAVE A WOODEN OR LAMINATE FLOOR, WE WOULD ADVISE YOU TO TAKE STEPS TO PROTECT YOUR FLOOR FROM POTENTIAL SCRATCHES AND MARKS. THE EASIEST WAY IS TO PLACE PROTECTIVE PADS UNDER THE FEET OF YOUR UPHOLSTERY TO PREVENT MARKS BEING MADE OR PLACE THE UPHOLSTERY ON TOP OF A PROTECTIVE COVER. THE MANUFACTURER CANNOT BE HELD RESPONSIBLE FOR DAMAGE SUBSEQUENTLY CAUSED TO YOUR FLOORING BY NOT TAKING THE RECOMMENDED PREVENTATIVE MEASURES

PLEASE TURN OVER



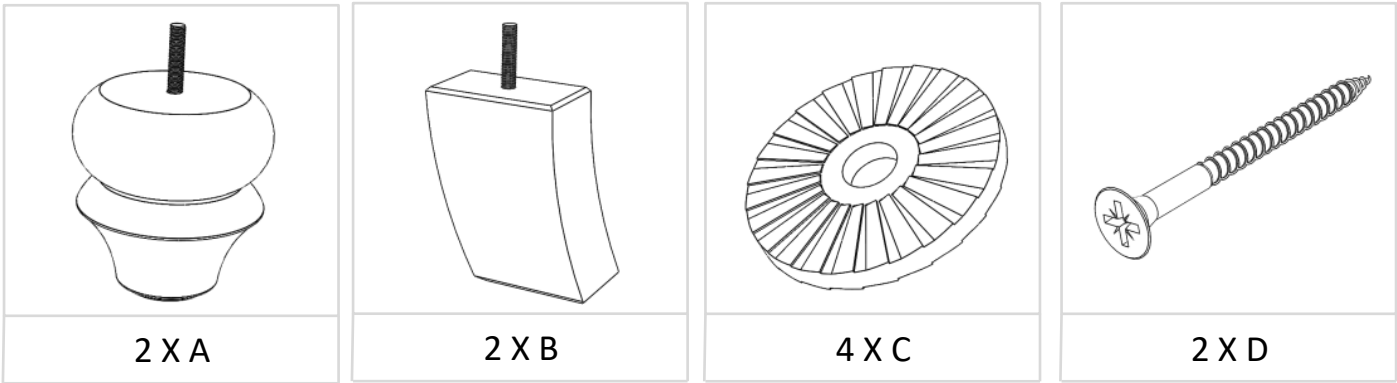
# **ASSEMBLY INSTRUCTIONS**

**GAINSBOROUGH  
3 SEATER SOFA**

# GAINSBOROUGH – 3 SEATER – 2 SEATER – LOVE CHAIR

## OAK EFFECT

Please note this should be carried out by 2 people!



Each foot (A,B) requires one washer (C)

Each foot (B) requires one fixing screw (D)

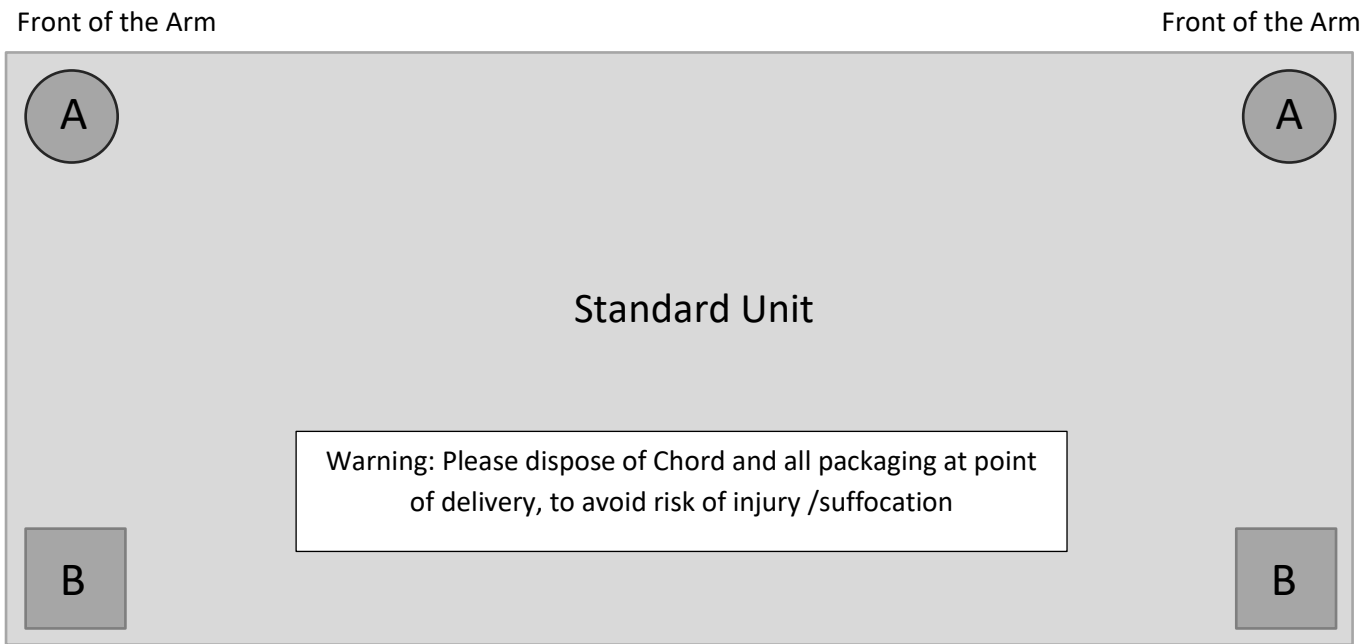


Figure 1

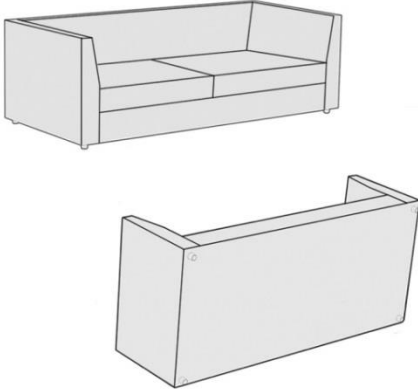
PLEASE TURN OVER

# GAINSBOROUGH – 3 SEATER – 2 SEATER – LOVE CHAIR

Please note this should be carried out by 2 people!

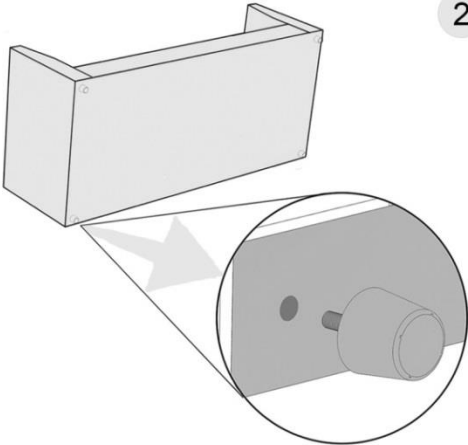
PLEASE FOLLOW THE STEPS BELOW FOR ATTACHING YOUR FEET

1



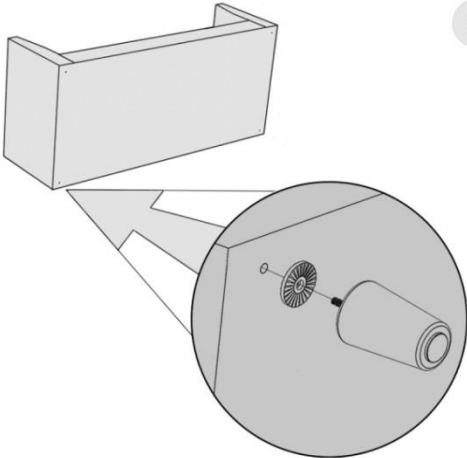
Gently turn your product onto its back or upside down.

2



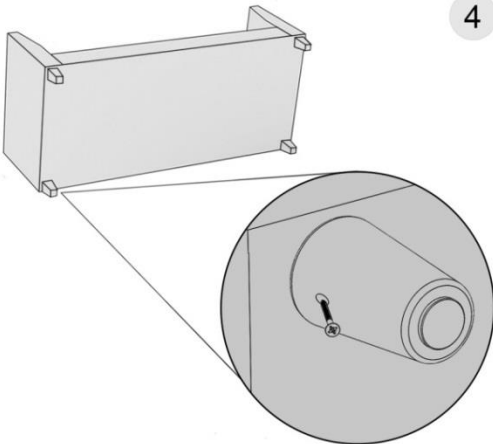
Remove the travel glides from each corner.

3



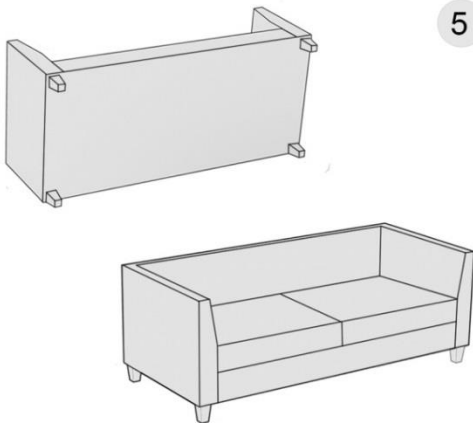
Attach the correct foot and washer quantity in accordance to the foot placement diagram (figure 1)

4



— IF your foot is provided with 38MM or 45MM attaching screws please screw them in now.

5



Gently turn your product back upright taking care not to knock the feet.

PLEASE NOTE IF YOU HAVE A WOODEN OR LAMINATE FLOOR, WE WOULD ADVISE YOU TO TAKE STEPS TO PROTECT YOUR FLOOR FROM POTENTIAL SCRATCHES AND MARKS. THE EASIEST WAY IS TO PLACE PROTECTIVE PADS UNDER THE FEET OF YOUR UPHOLSTERY TO PREVENT MARKS BEING MADE OR PLACE THE UPHOLSTERY ON TOP OF A PROTECTIVE COVER. THE MANUFACTURER CANNOT BE HELD RESPONSIBLE FOR DAMAGE SUBSEQUENTLY CAUSED TO YOUR FLOORING BY NOT TAKING THE RECOMMENDED PREVENTATIVE MEASURES

PLEASE TURN OVER



# **ASSEMBLY INSTRUCTIONS**

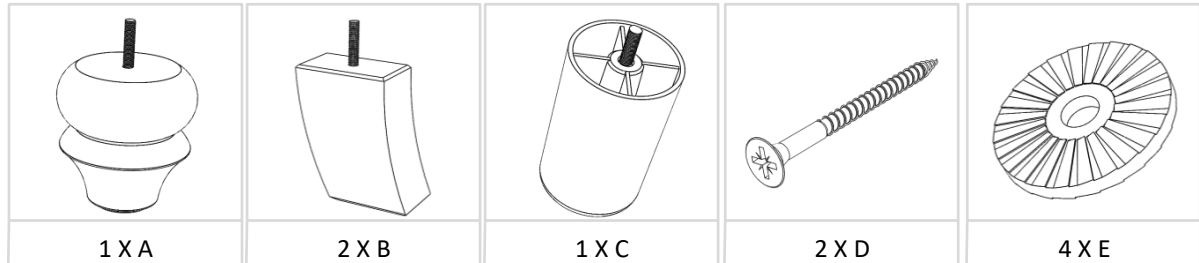
**GAINSBOROUGH  
CORNER SOFA**

# GAINSBOROUGH – 2 SEATER UNIT

## – SMALL ARM UNIT

### OAK EFFECT

Please note this should be carried out by 2 people!



Each foot (A, B, C) requires one washer (E)

Each foot (B) requires one fixing screw (D)

Front of the Arm

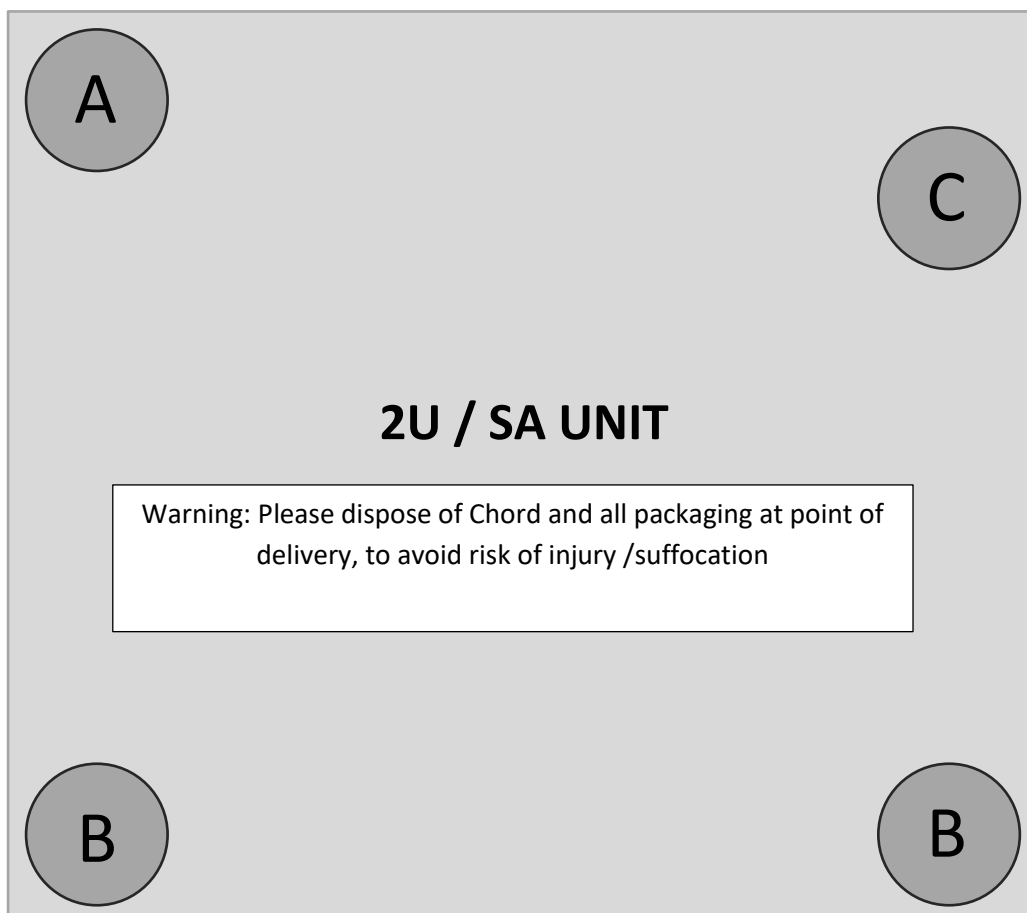


Figure 1

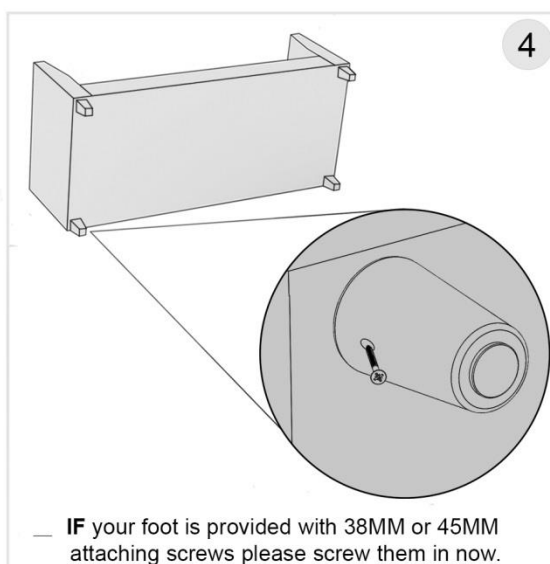
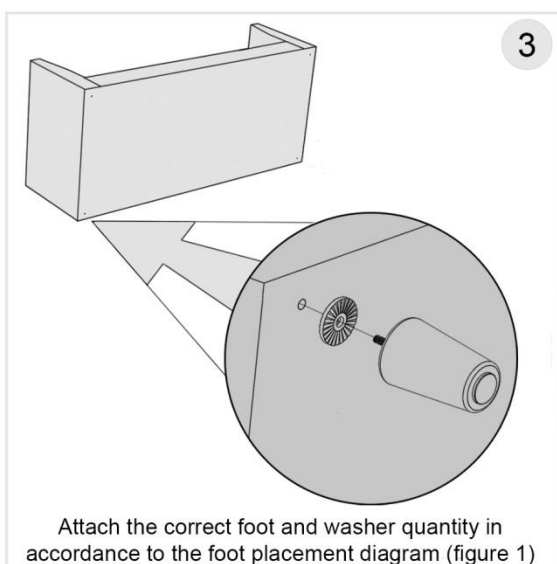
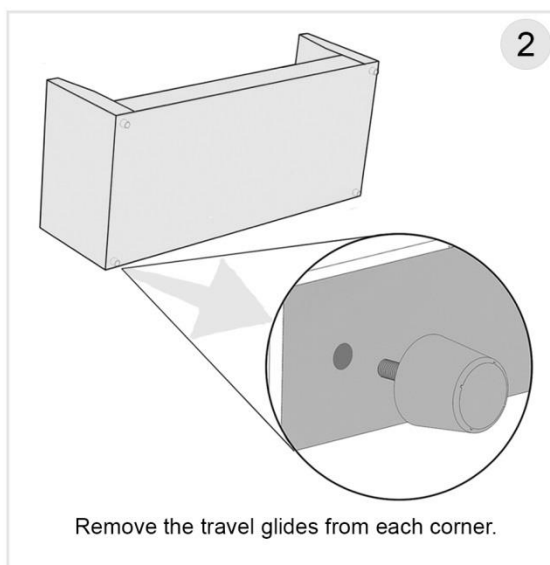
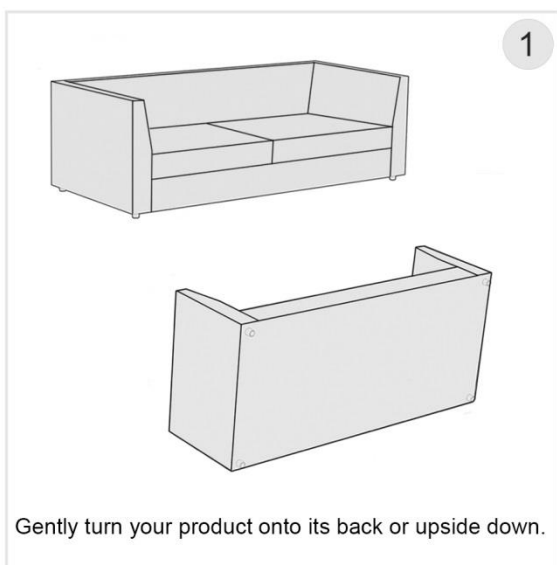
PLEASE TURN OVER



# GAINSBOROUGH – 2 SEATER UNIT – SA UNIT

Please note this should be carried out by 2 people!

PLEASE FOLLOW THE STEPS BELOW FOR ATTACHING YOUR FEET



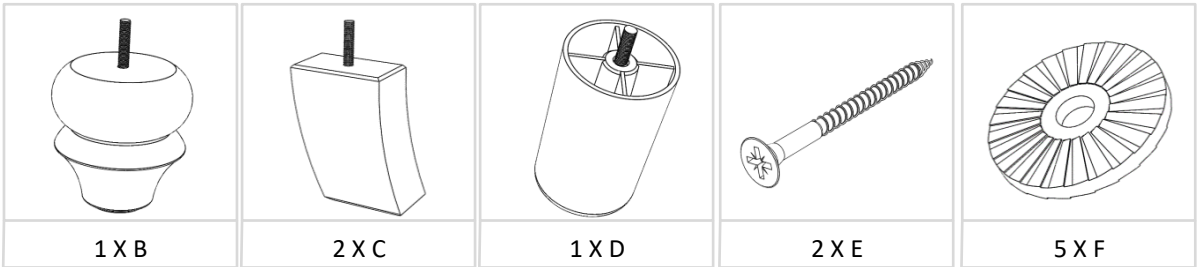
PLEASE NOTE IF YOU HAVE A WOODEN OR LAMINATE FLOOR, WE WOULD ADVISE YOU TO TAKE STEPS TO PROTECT YOUR FLOOR FROM POTENTIAL SCRATCHES AND MARKS. THE EASIEST WAY IS TO PLACE PROTECTIVE PADS UNDER THE FEET OF YOUR UPHOLSTERY TO PREVENT MARKS BEING MADE OR PLACE THE UPHOLSTERY ON TOP OF A PROTECTIVE COVER. THE MANUFACTURER CANNOT BE HELD RESPONSIBLE FOR DAMAGE SUBSEQUENTLY CAUSED TO YOUR FLOORING BY NOT TAKING THE RECOMMENDED PREVENTATIVE MEASURES

PLEASE TURN OVER

# GAINSBOROUGH – 4 SEATER SPLIT (LEFT)

## OAK EFFECT

Please note this should be carried out by 2 people!



Each foot (B,C) requires one washer (F)

Foot (D) requires two washers (F)

Each foot (C) requires one fixing screw (E)

Front of the Arm

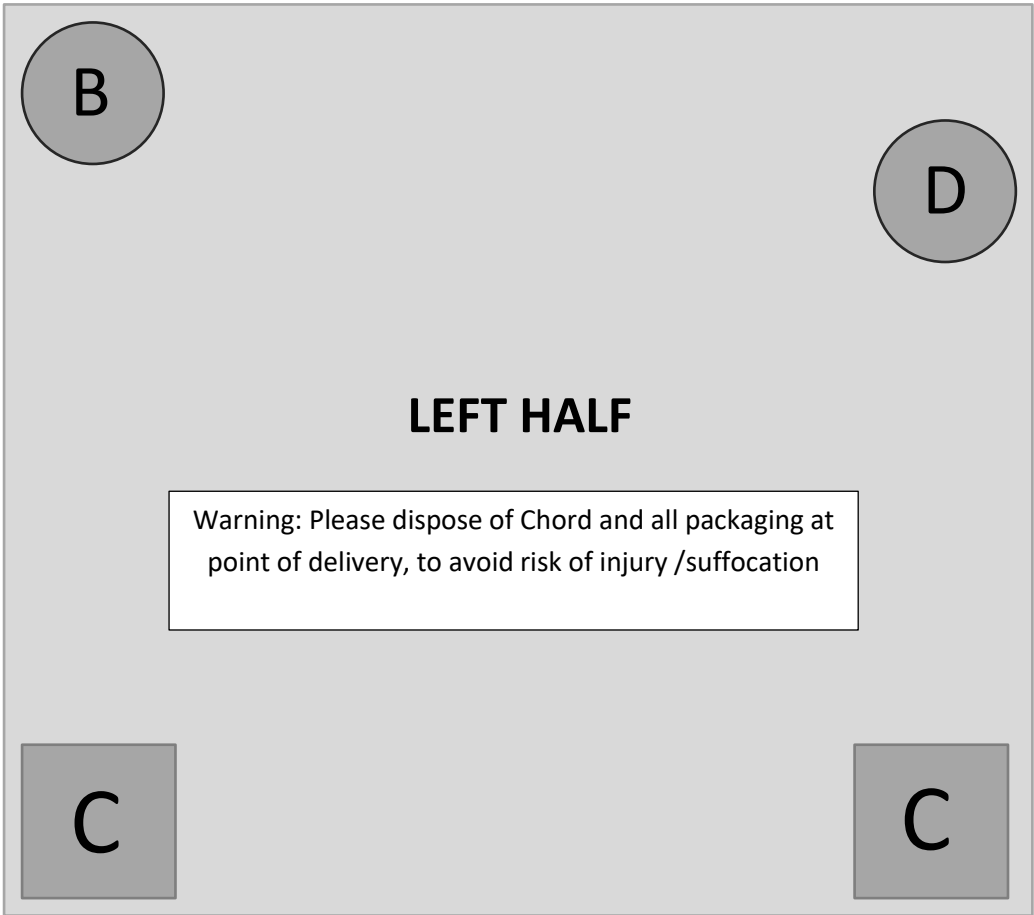


Figure 1

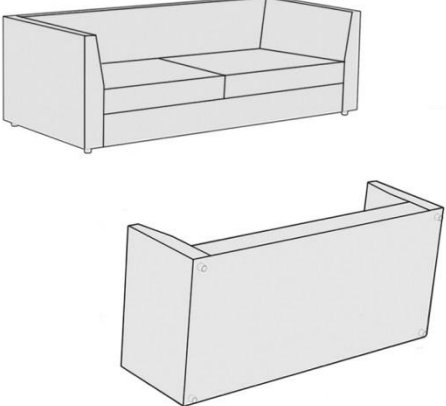
PLEASE TURN OVER

# GAINSBOROUGH – 4 SEATER SPLIT (LEFT)

Please note this should be carried out by 2 people!

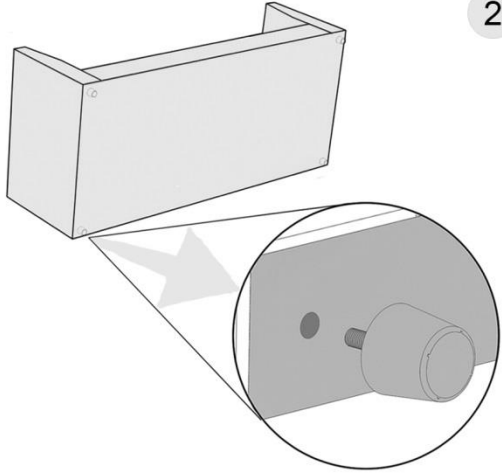
PLEASE FOLLOW THE STEPS BELOW FOR ATTACHING YOUR FEET

1



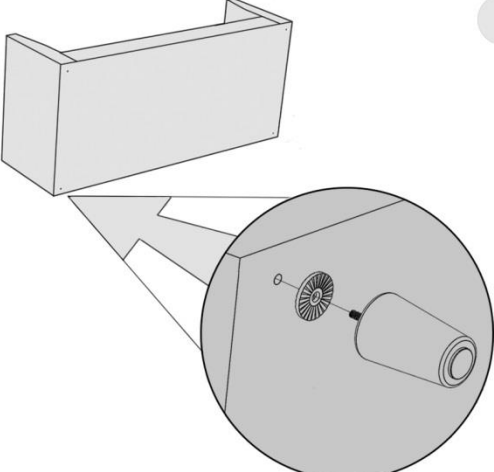
Gently turn your product onto its back or upside down.

2



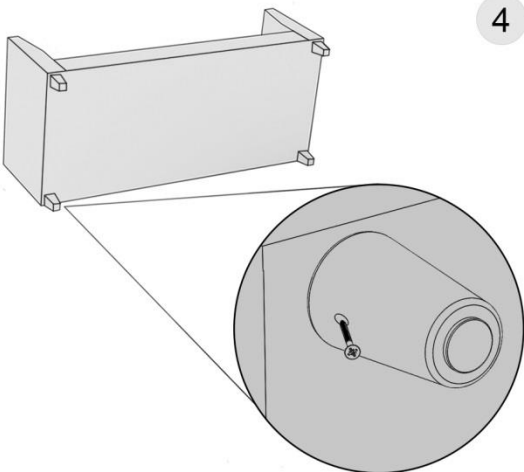
Remove the travel glides from each corner.

3



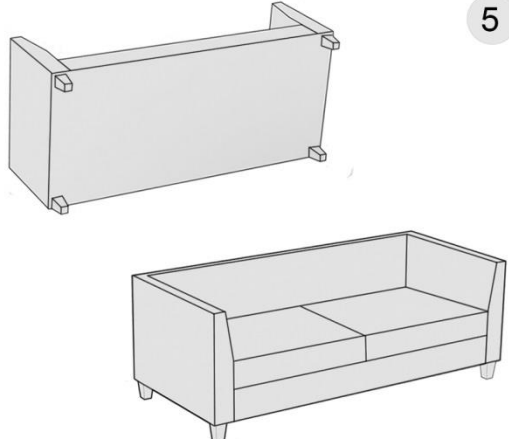
Attach the correct foot and washer quantity in accordance to the foot placement diagram (figure 1)

4



— IF your foot is provided with 38MM or 45MM attaching screws please screw them in now.

5



Gently turn your product back upright taking care not to knock the feet.

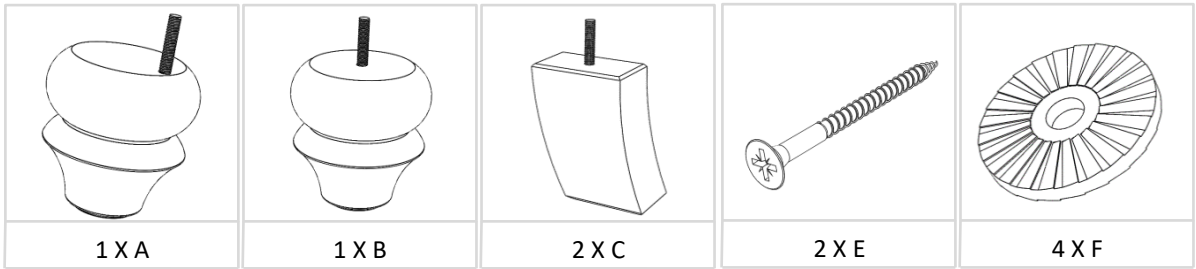
PLEASE NOTE IF YOU HAVE A WOODEN OR LAMINATE FLOOR, WE WOULD ADVISE YOU TO TAKE STEPS TO PROTECT YOUR FLOOR FROM POTENTIAL SCRATCHES AND MARKS. THE EASIEST WAY IS TO PLACE PROTECTIVE PADS UNDER THE FEET OF YOUR UPHOLSTERY TO PREVENT MARKS BEING MADE OR PLACE THE UPHOLSTERY ON TOP OF A PROTECTIVE COVER. THE MANUFACTURER CANNOT BE HELD RESPONSIBLE FOR DAMAGE SUBSEQUENTLY CAUSED TO YOUR FLOORING BY NOT TAKING THE RECOMMENDED PREVENTATIVE MEASURES

PLEASE TURN OVER

# GAINSBOROUGH – 4 SEATER SPLIT (RIGHT)

## OAK EFFECT

Please note this should be carried out by 2 people!



Each foot (A,B,C) requires one washer (F)

Each foot (C) requires one fixing screw (E)

Front of the Arm

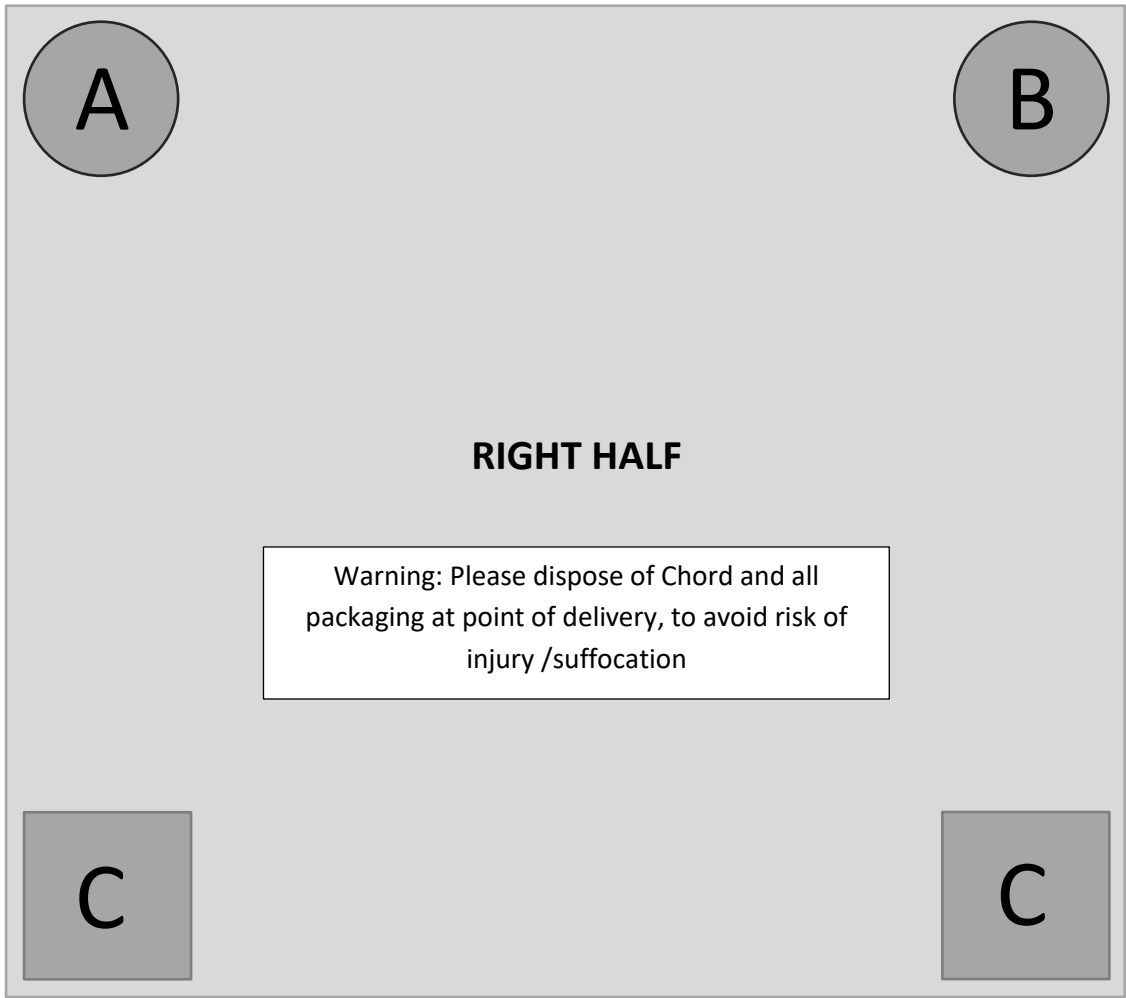


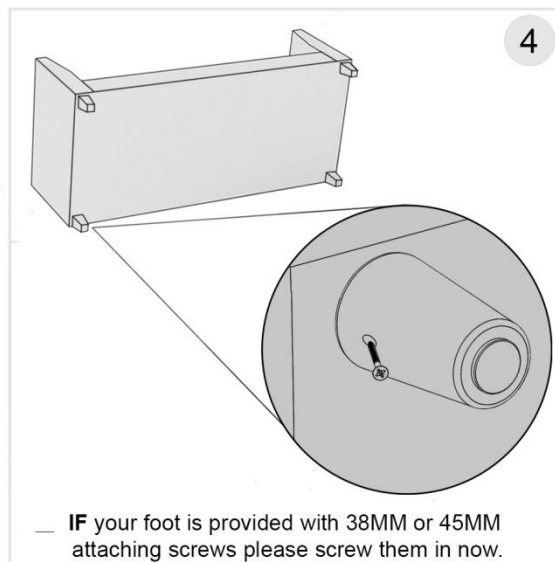
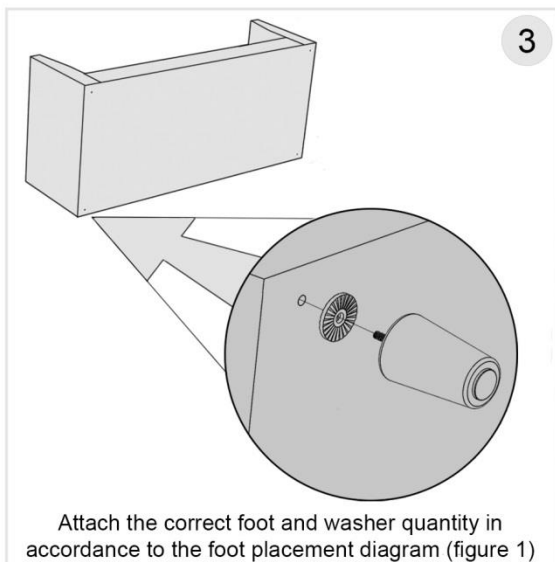
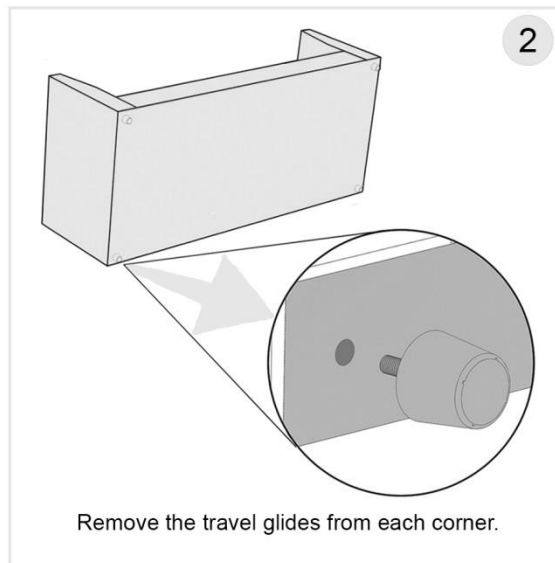
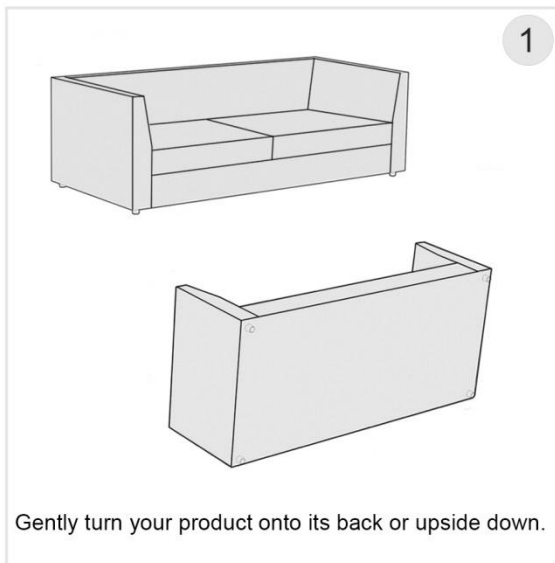
Figure 1

PLEASE TURN OVER

# GAINSBOROUGH – 4 SEATER SPLIT (RIGHT)

Please note this should be carried out by 2 people!

PLEASE FOLLOW THE STEPS BELOW FOR ATTACHING YOUR FEET



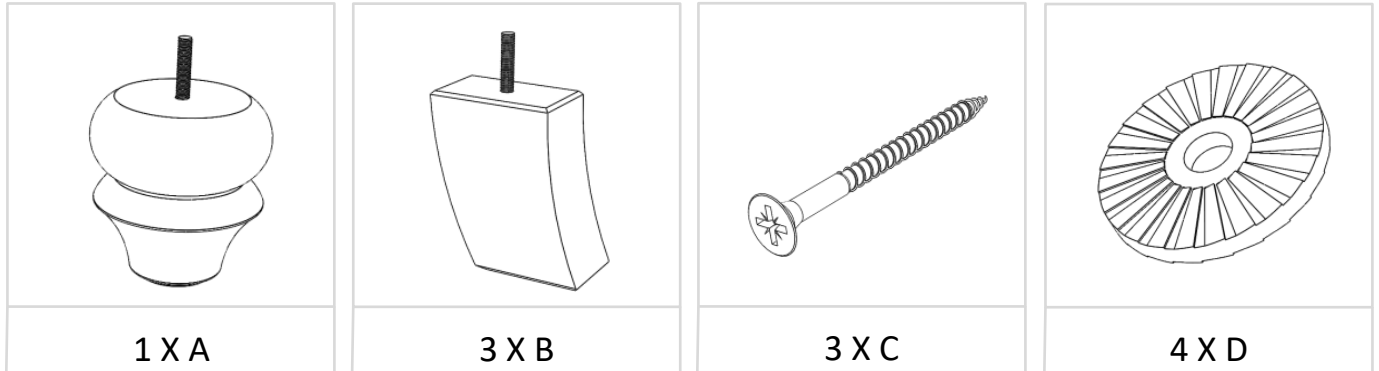
PLEASE NOTE IF YOU HAVE A WOODEN OR LAMINATE FLOOR, WE WOULD ADVISE YOU TO TAKE STEPS TO PROTECT YOUR FLOOR FROM POTENTIAL SCRATCHES AND MARKS. THE EASIEST WAY IS TO PLACE PROTECTIVE PADS UNDER THE FEET OF YOUR UPHOLSTERY TO PREVENT MARKS BEING MADE OR PLACE THE UPHOLSTERY ON TOP OF A PROTECTIVE COVER. THE MANUFACTURER CANNOT BE HELD RESPONSIBLE FOR DAMAGE SUBSEQUENTLY CAUSED TO YOUR FLOORING BY NOT TAKING THE RECOMMENDED PREVENTATIVE MEASURES

PLEASE TURN OVER

# GAINSBOROUGH – Corner

## OAK EFFECT

Please note this should be carried out by 2 people!



Please note each foot (A, B) requires one washer (D)

Each foot (B) requires one screw (C)

Warning: Please dispose of Chord and all packaging at point of delivery,  
to avoid risk of injury /suffocation

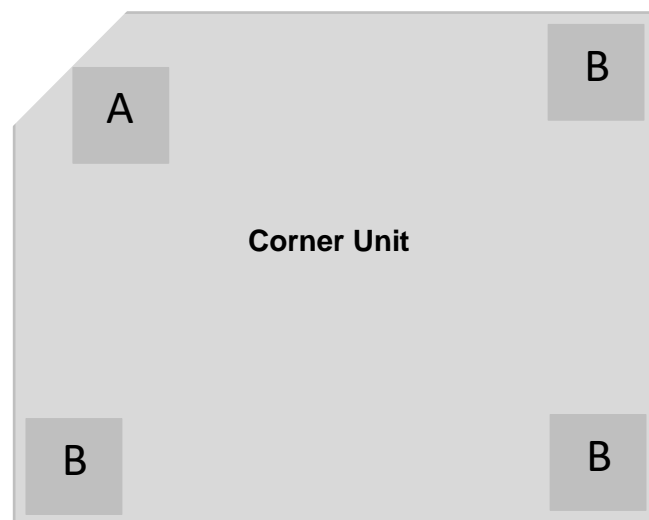


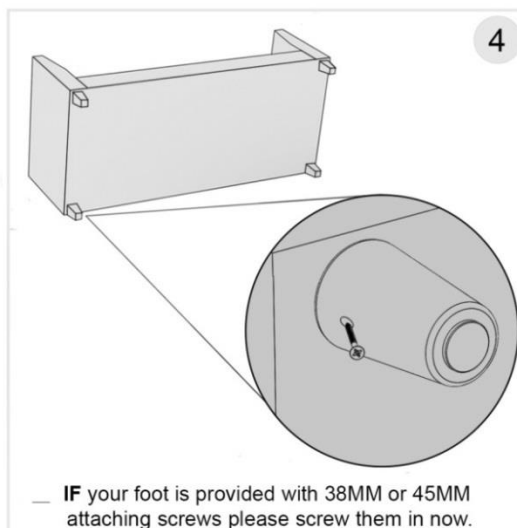
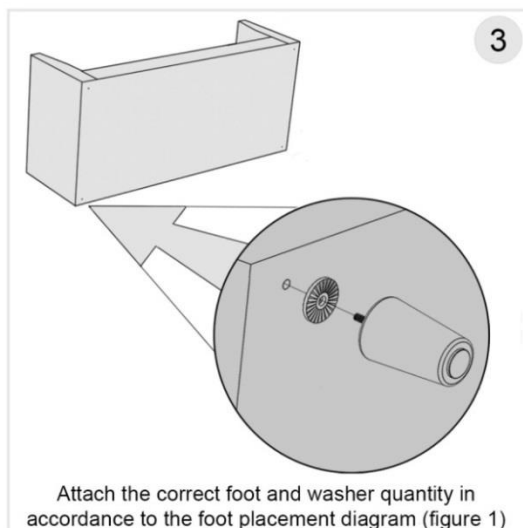
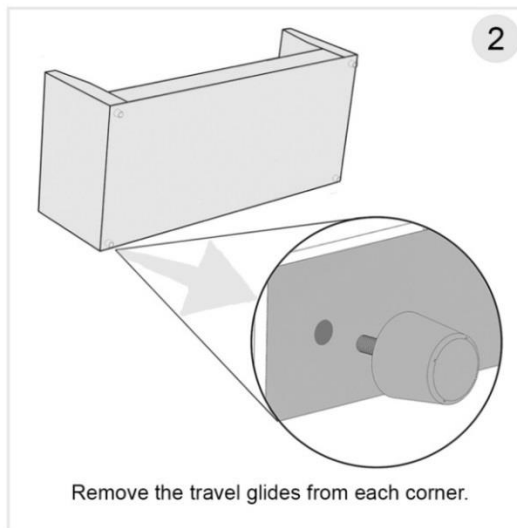
Figure 1

PLEASE TURN OVER

# GAINSBOROUGH – Corner

Please note this should be carried out by 2 people!

PLEASE FOLLOW THE STEPS BELOW FOR ATTACHING YOUR FEET



PLEASE NOTE IF YOU HAVE A WOODEN OR LAMINATE FLOOR, WE WOULD ADVISE YOU TO TAKE STEPS TO PROTECT YOUR FLOOR FROM POTENTIAL SCRATCHES AND MARKS. THE EASIEST WAY IS TO PLACE PROTECTIVE PADS UNDER THE FEET OF YOUR UPHOLSTERY TO PREVENT MARKS BEING MADE OR PLACE THE UPHOLSTERY ON TOP OF A PROTECTIVE COVER. THE MANUFACTURER CANNOT BE HELD RESPONSIBLE FOR DAMAGE SUBSEQUENTLY CAUSED TO YOUR FLOORING BY NOT TAKING THE RECOMMENDED PREVENTATIVE MEASURES

PLEASE TURN OVER



# **ASSEMBLY INSTRUCTIONS**

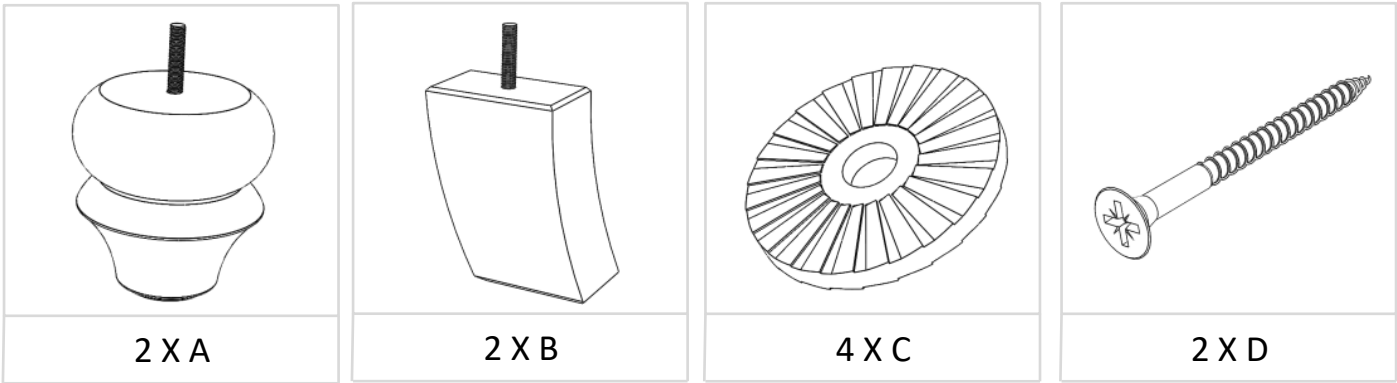
**GAINSBOROUGH  
LOVESEAT**



# GAINSBOROUGH – 3 SEATER – 2 SEATER – LOVE CHAIR

## OAK EFFECT

Please note this should be carried out by 2 people!



Each foot (A,B) requires one washer (C)

Each foot (B) requires one fixing screw (D)

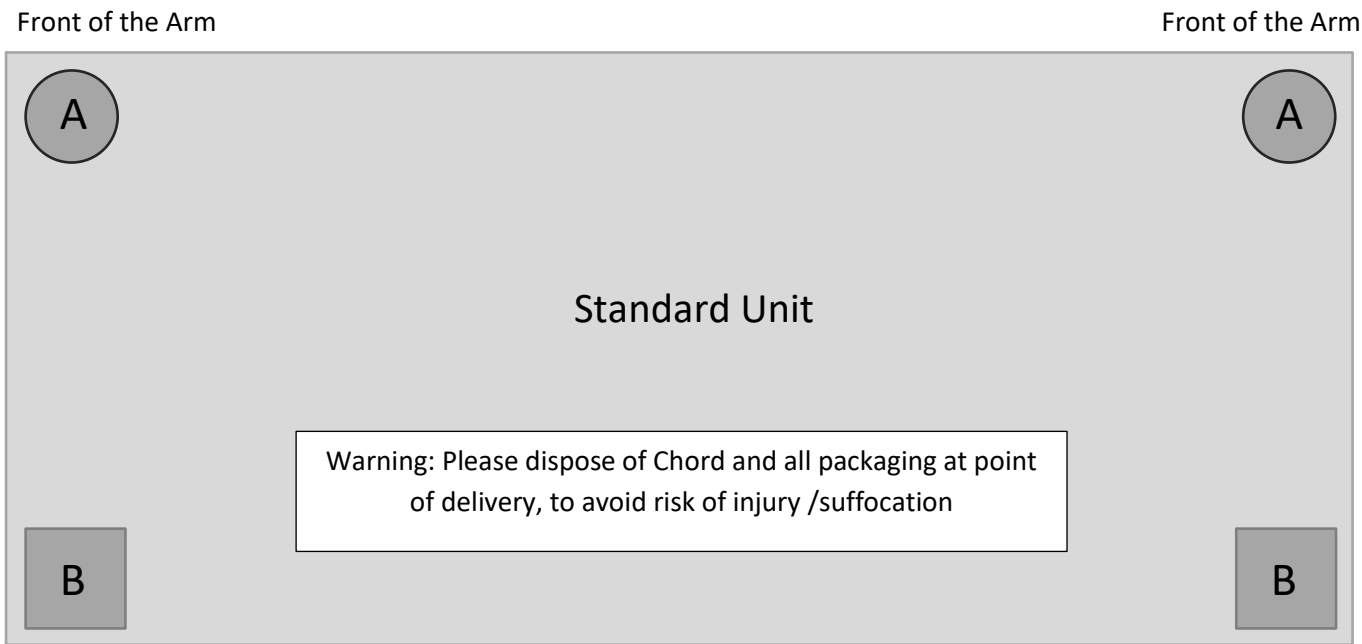


Figure 1

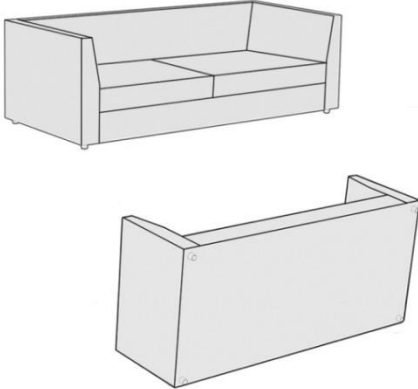
PLEASE TURN OVER

# GAINSBOROUGH – 3 SEATER – 2 SEATER – LOVE CHAIR

Please note this should be carried out by 2 people!

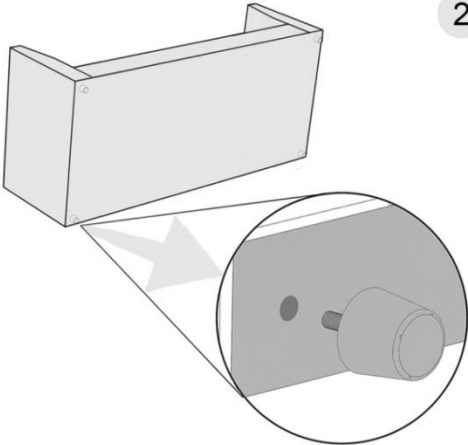
PLEASE FOLLOW THE STEPS BELOW FOR ATTACHING YOUR FEET

1



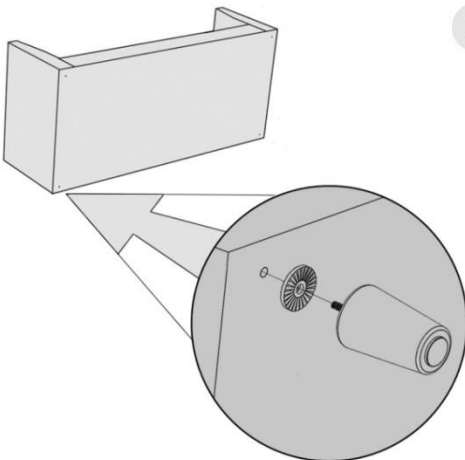
Gently turn your product onto its back or upside down.

2



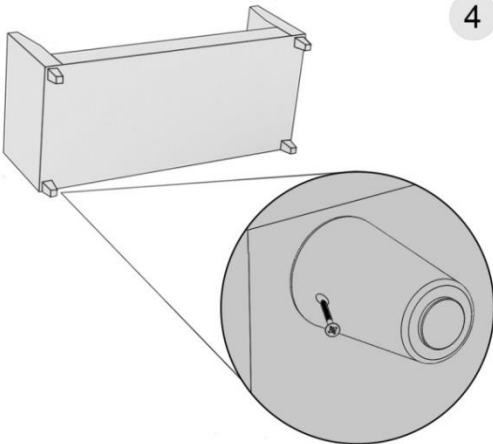
Remove the travel glides from each corner.

3



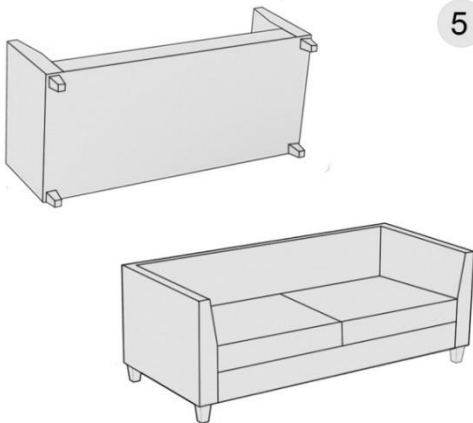
Attach the correct foot and washer quantity in accordance to the foot placement diagram (figure 1)

4



— IF your foot is provided with 38MM or 45MM attaching screws please screw them in now.

5



Gently turn your product back upright taking care not to knock the feet.

PLEASE NOTE IF YOU HAVE A WOODEN OR LAMINATE FLOOR, WE WOULD ADVISE YOU TO TAKE STEPS TO PROTECT YOUR FLOOR FROM POTENTIAL SCRATCHES AND MARKS. THE EASIEST WAY IS TO PLACE PROTECTIVE PADS UNDER THE FEET OF YOUR UPHOLSTERY TO PREVENT MARKS BEING MADE OR PLACE THE UPHOLSTERY ON TOP OF A PROTECTIVE COVER. THE MANUFACTURER CANNOT BE HELD RESPONSIBLE FOR DAMAGE SUBSEQUENTLY CAUSED TO YOUR FLOORING BY NOT TAKING THE RECOMMENDED PREVENTATIVE MEASURES

PLEASE TURN OVER



# **ASSEMBLY INSTRUCTIONS**

**GAINSBOROUGH  
FOOTSTOOL**

# GAINSBOROUGH – Storage Stool

## OAK EFFECT

Please note this should be carried out by 2 people!

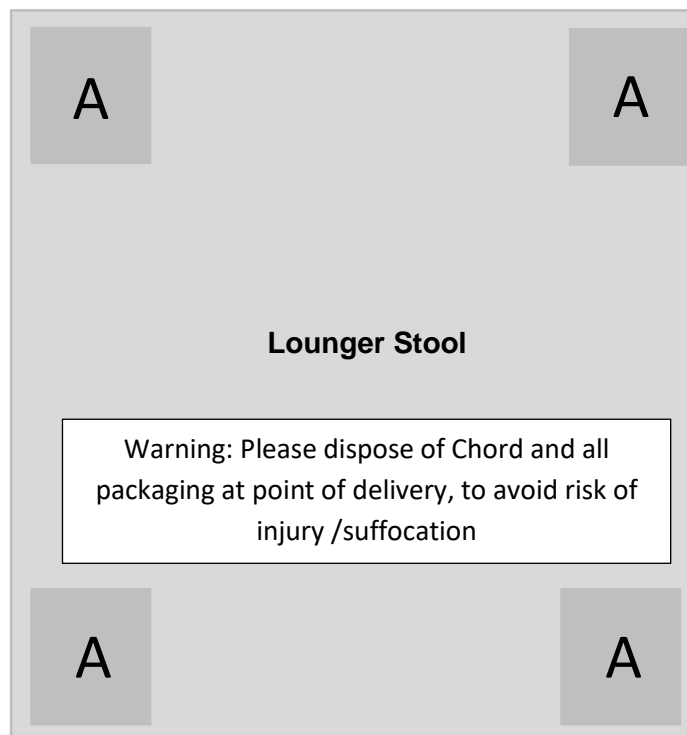
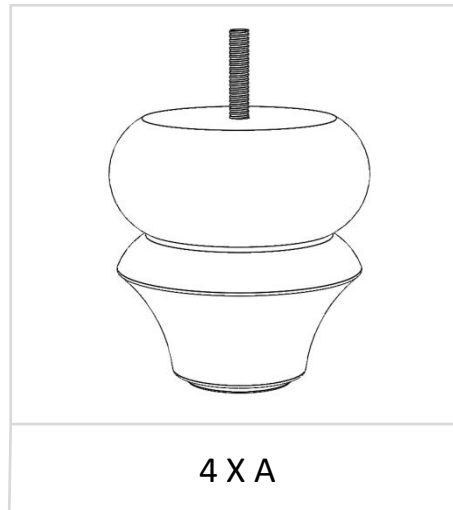


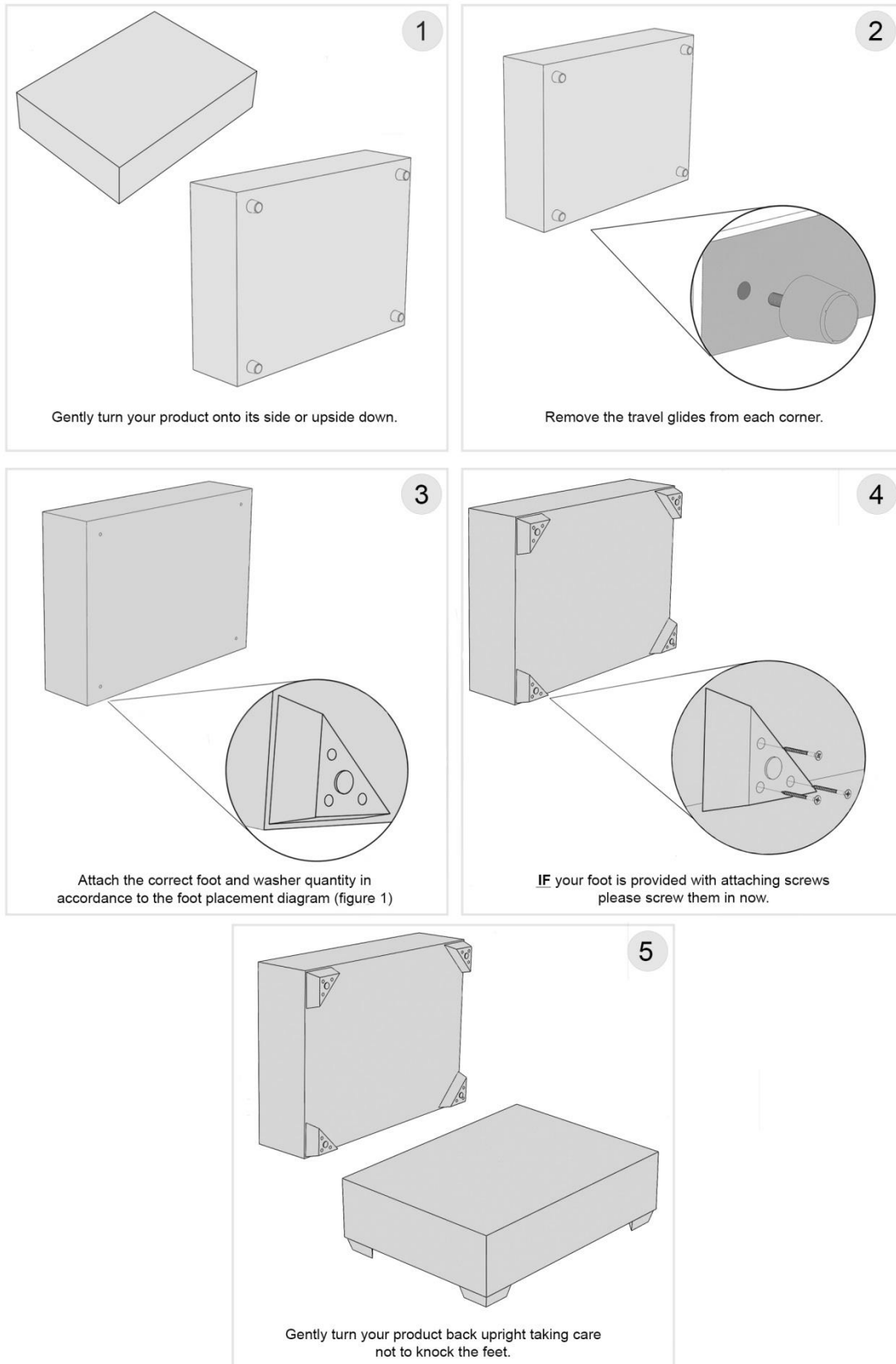
Figure 1

PLEASE TURN OVER

# GAINSBOROUGH – Storage Stool

Please note this should be carried out by 2 people!

PLEASE FOLLOW THE STEPS BELOW FOR ATTACHING YOUR FEET



PLEASE NOTE IF YOU HAVE A WOODEN OR LAMINATE FLOOR, WE WOULD ADVISE YOU TO TAKE STEPS TO PROTECT YOUR FLOOR FROM POTENTIAL SCRATCHES AND MARKS. THE EASIEST WAY IS TO PLACE PROTECTIVE PADS UNDER THE FEET OF YOUR UPHOLSTERY TO PREVENT MARKS BEING MADE OR PLACE THE UPHOLSTERY ON TOP OF A PROTECTIVE COVER. THE MANUFACTURER CANNOT BE HELD RESPONSIBLE FOR DAMAGE SUBSEQUENTLY CAUSED TO YOUR FLOORING BY NOT TAKING THE RECOMMENDED PREVENTATIVE MEASURES

PLEASE TURN OVER