



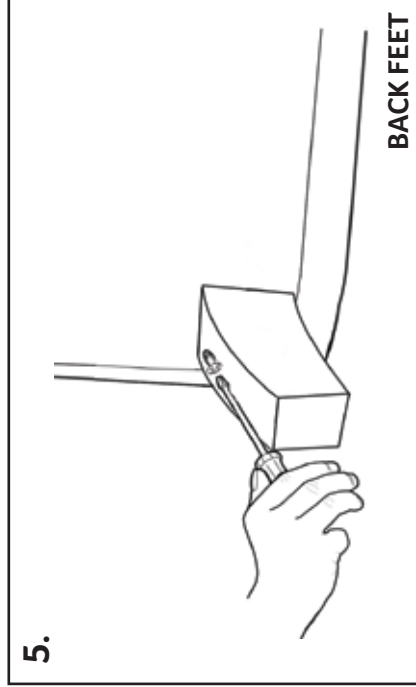
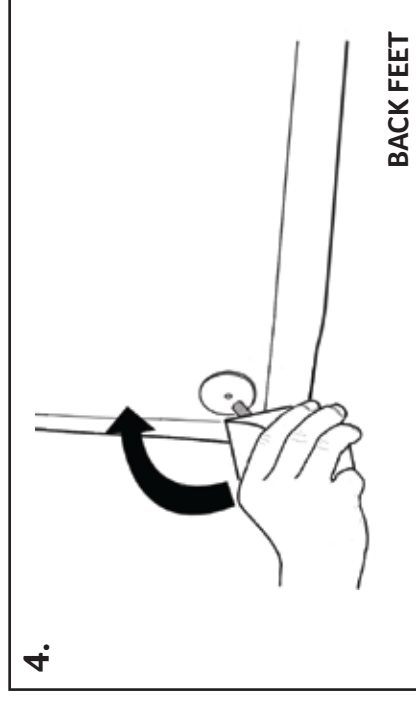
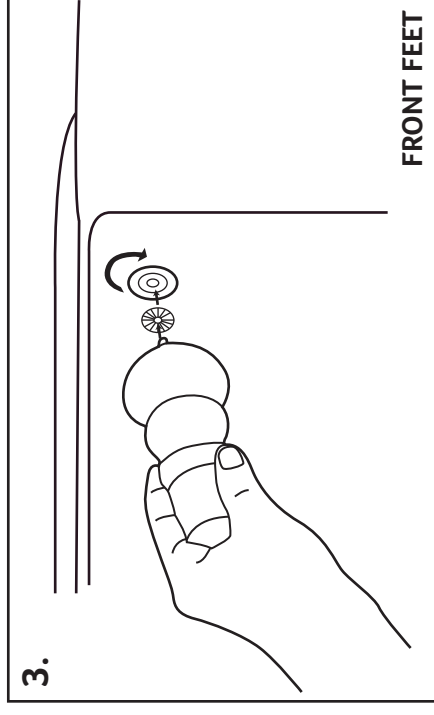
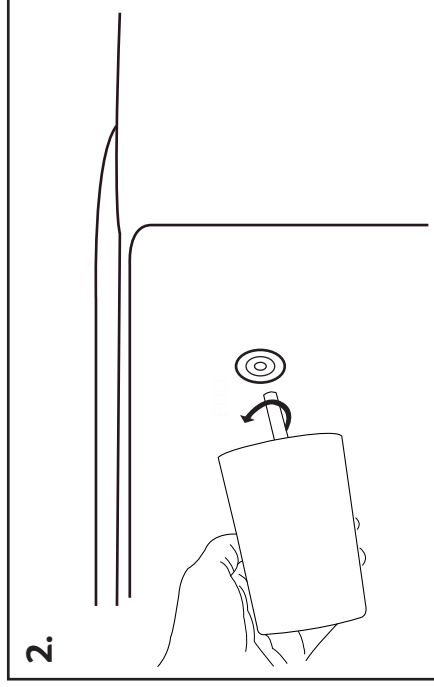
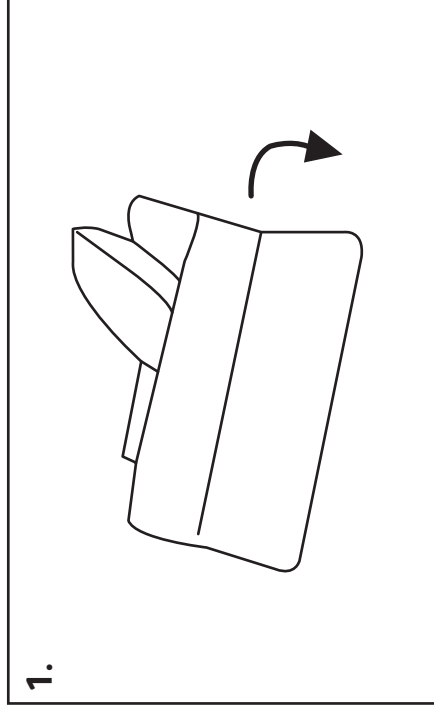
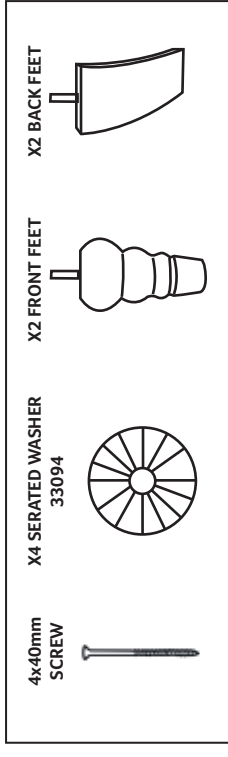
ASSEMBLY INSTRUCTIONS

**BRAMBLE
ARMCHAIR**

BRAMBLE FOOT FITTING INSTRUCTIONS - OFL

FURNITURE IS HEAVY, MOVING OR LIFTING SHOULD NOT BE ATTEMPTED ON YOUR OWN

1. CAREFULLY PLACE SOFA ON ITS BACK.
2. REMOVE ALL TRAVEL GLIDES.
3. PLACE SERRATED WASHER OVER THE SCREW ON FRONT FEET AND SCREW THEM IN CLOCKWISE UNTIL TIGHT.
4. SCREW ON THE BACK FEET BY SCREWING THEM IN CLOCKWISE UNTIL TIGHT (POSITIONED AS IN STEP 4).
5. INSERT 4 x 40 SCREW INTO HOLE LOCATED AT THE REAR OF FOOT AND TURN CLOCKWISE UNTIL SECURE.





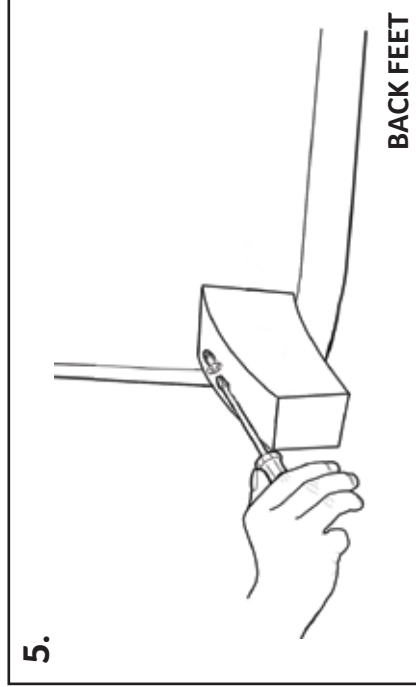
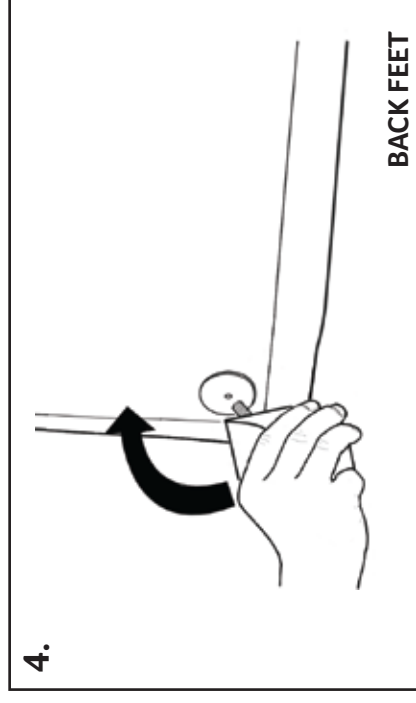
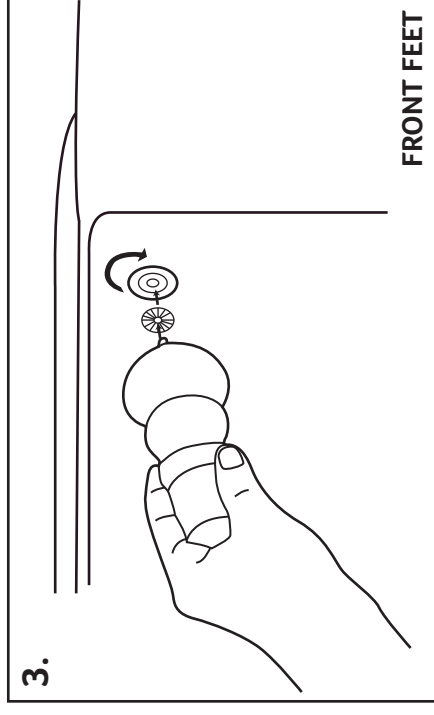
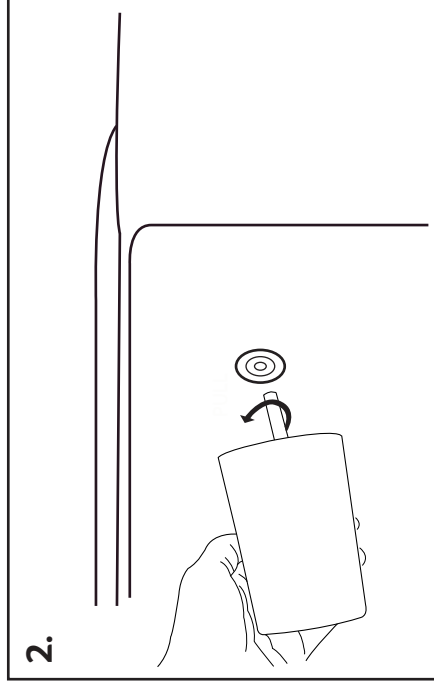
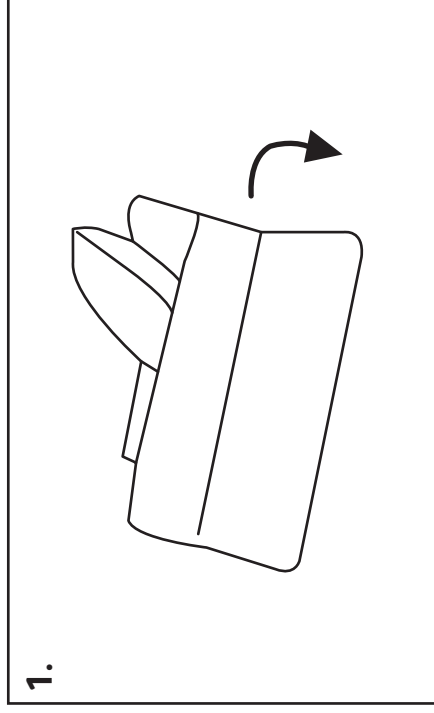
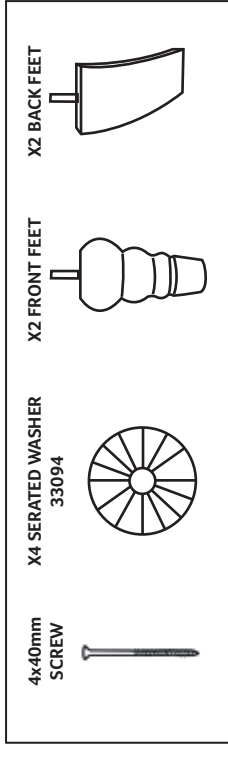
ASSEMBLY INSTRUCTIONS

**BRAMBLE
2 SEATER SOFA**

BRAMBLE FOOT FITTING INSTRUCTIONS - OFL

FURNITURE IS HEAVY, MOVING OR LIFTING SHOULD NOT BE ATTEMPTED ON YOUR OWN

1. CAREFULLY PLACE SOFA ON ITS BACK.
2. REMOVE ALL TRAVEL GLIDES.
3. PLACE SERRATED WASHER OVER THE SCREW ON FRONT FEET AND SCREW THEM IN CLOCKWISE UNTIL TIGHT.
4. SCREW ON THE BACK FEET BY SCREWING THEM IN CLOCKWISE UNTIL TIGHT (POSITIONED AS IN STEP 4).
5. INSERT 4 x 40 SCREW INTO HOLE LOCATED AT THE REAR OF FOOT AND TURN CLOCKWISE UNTIL SECURE.





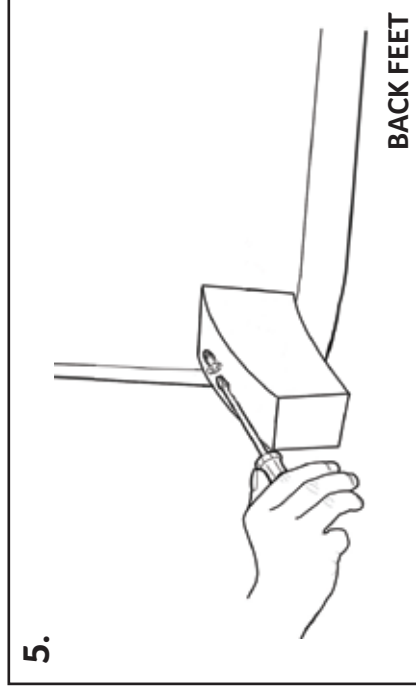
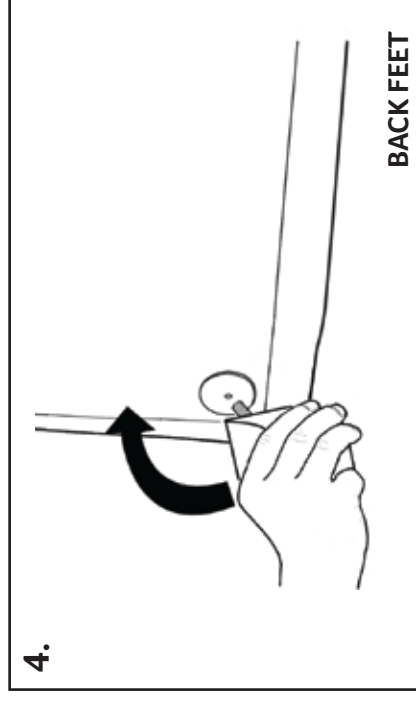
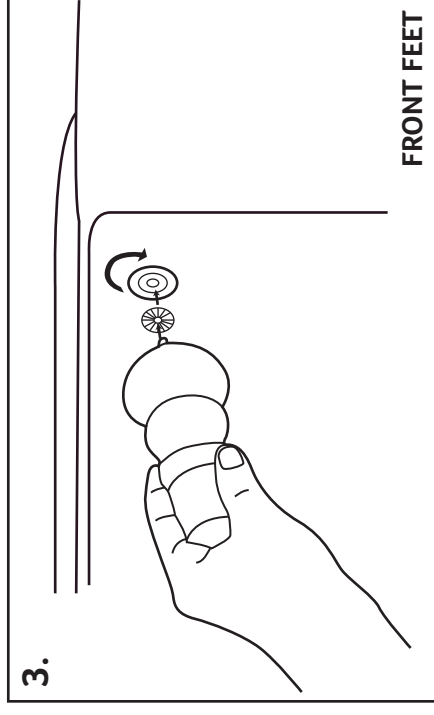
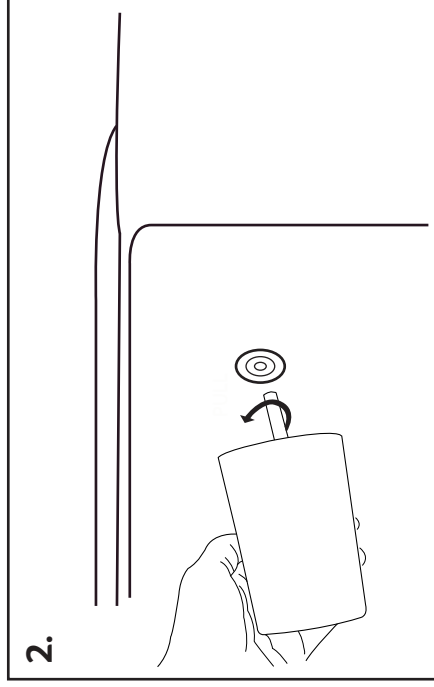
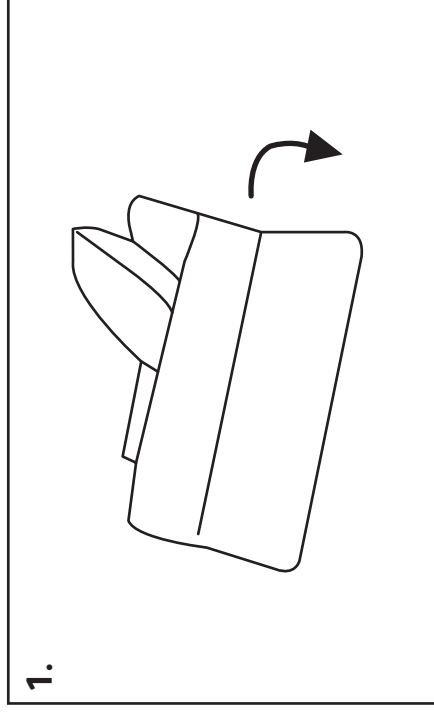
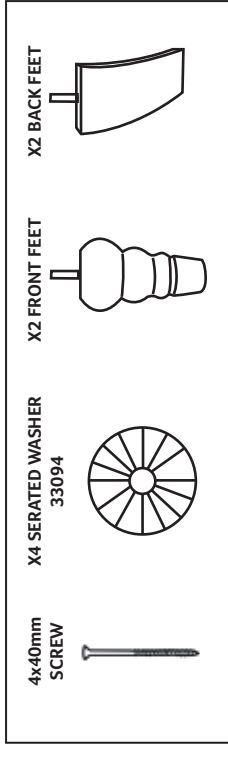
ASSEMBLY INSTRUCTIONS

**BRAMBLE
3 SEATER SOFA**

BRAMBLE FOOT FITTING INSTRUCTIONS - OFL

FURNITURE IS HEAVY, MOVING OR LIFTING SHOULD NOT BE ATTEMPTED ON YOUR OWN

1. CAREFULLY PLACE SOFA ON ITS BACK.
2. REMOVE ALL TRAVEL GLIDES.
3. PLACE SERRATED WASHER OVER THE SCREW ON FRONT FEET AND SCREW THEM IN CLOCKWISE UNTIL TIGHT.
4. SCREW ON THE BACK FEET BY SCREWING THEM IN CLOCKWISE UNTIL TIGHT (POSITIONED AS IN STEP 4).
5. INSERT 4 x 40 SCREW INTO HOLE LOCATED AT THE REAR OF FOOT AND TURN CLOCKWISE UNTIL SECURE.





ASSEMBLY INSTRUCTIONS

**BRAMBLE
FOOTSTOOL**

BRAMBLE FOOTSTOOL FOOT FITTING INSTRUCTIONS - OFL

FURNITURE IS HEAVY, MOVING OR LIFTING SHOULD NOT BE ATTEMPTED ON YOUR OWN

1. CAREFULLY PLACE FOOTSTOOL ON ITS BACK.

2. PLACE SERRATED WASHER OVER THE SCREW ON FRONT FEET AND SCREW THEM IN CLOCKWISE UNTIL TIGHT.

